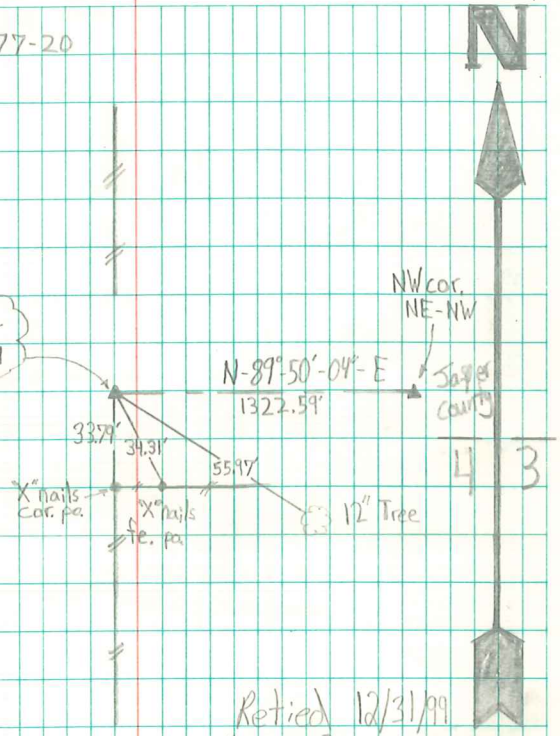


NW corner Sec. 3-77-20

Set 1/2" Rebar cap # 3321



NW cor. NE-NW

N-89°-50'-04"-E  
1322.59'

33.77'

X" nails cor. pa.

X" nails 12" Tree

34.31'

55.97'

12" Tree

Retied 12/31/99  
Henry S. Oakes

43