



Document 23-1776

Book 2023 Page 1776 Type CORNR Pages 1  
Date 5/08/2023 Time 11:04 AM  
Rec Amt \$7.00



GARDEN & ASSOC.

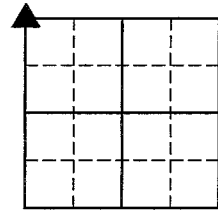
P.O. Box 451, Oskaloosa, Iowa 52577-0451 Phone: (641)672-2526

NAOMI ELLIS, RECORDER  
MARION COUNTY IOWA

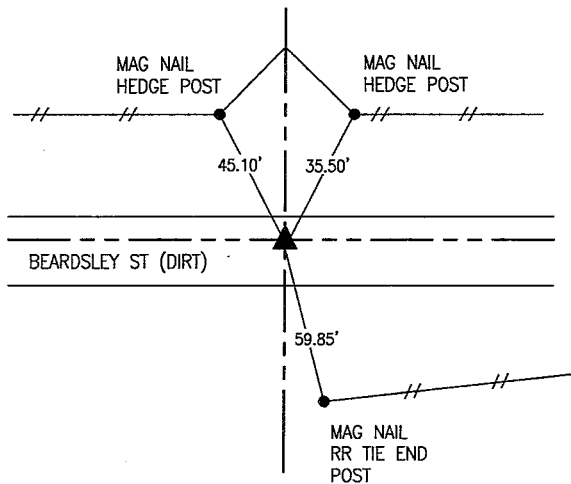
UNITED STATES PUBLIC LAND SURVEY CORNER CERTIFICATE  
OF

Land Survey Monuments situated in Section 8, Township 77, Range 20, of the Fifth Principal Meridian, MARION County, Iowa. Previously recorded in NO CERTIFICATE OF RECORD in County Recorder's Office.

Monument Description and Remarks: SEE BELOW



NW CORNER



APRIL 2023  
FOUND BENT WAGON HUB WITH WPA CONCRETE MONUMENT 6" SOUTH FROM COUNTY ENGINEER TIES. TOP OF C.M. IS 12" DEEP. THE WAGON HUB IS THE CORNER AND MADE NOTCH AT LOCATION USED. MONUMENT IS APPROXIMATELY 5' NORTH OF ROAD CENTERLINE.

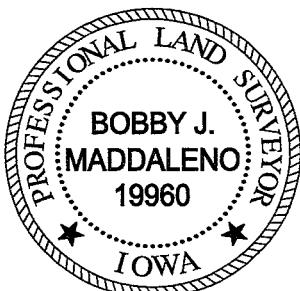
I hereby certify that this land surveying document was prepared and the related survey work was performed by me or under my direct personal supervision and that I am a duly licensed Professional Land Surveyor under the laws of the State of Iowa.

Bobby J. Maddaleno 5/4/23  
Bobby J. Maddaleno, P.L.S. Date

License number: 19960

My license renewal date is December 31, 2023

SEAL



List Corners to be Indexed			
Corners	Section	Township	Range
NW COR.	8	77	20

Pd by Rock-Ret Garden & Assoc. Env.

Found 2-Wagon Hubs Filled with conc.  
over crackery

set C.M. 6" South of Wagon Hubs

Top of C.M. 12" Deep

N.E. Cor sec 7-77-20

Oct - 8-30-40

Notes: Wignal - Frazier, Elsberry,  
Mandell, Stone

