

KAREN SCHWANEBECK, RECORDER  
 MARION COUNTY IOWA

PREPARED BY: LARRY D. HYLER 3501 104th STREET URBANDALE IOWA 50322 PH: (515) 276-0467

UNITED STATES PUBLIC LAND SURVEY CORNER CERTIFICATE  
 OF

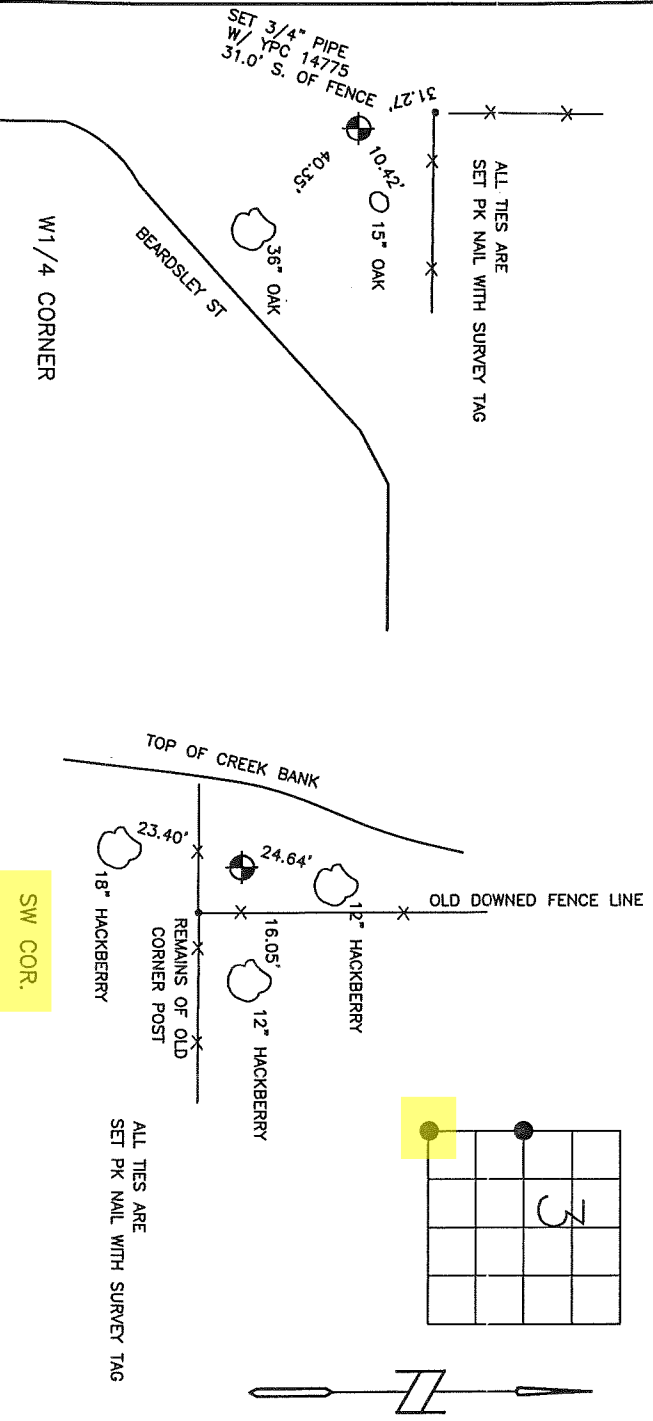
Land Survey Monuments situated in Section 3, Township 77 N, Range 20 W, of the Fifth Principal Meridian, MARION County, Iowa.

Previously recorded in Book COUNTY ENGINEER, Page \_\_\_\_\_.

(Show reason for preparing this certificate, the evidence and detailed procedures used in establishing the corner positions and monumentation found or placed).  
 Monument Description and Remarks:

**W1/4 CORNER**  
 SEARCHED BY DIGGING AND USING PROBE, SET CAPPED PIPE USING REMAINING FENCE LINE AND TIE TO 36" OAK TREE (CALLED AS 24" IN 1940 COUNTY TIES)  
**SOUTHWEST CORNER**  
 SEARCHED BY DIGGING AND USING PROBE, SET CAPPED PIPE USING REMAINING FENCE LINES AS CALLED FOR IN 1940 COUNTY TIES

PLAN-VIEW

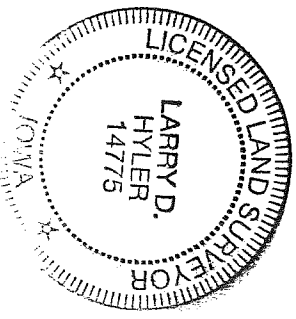


I hereby certify that the survey work was completed and this certificate was prepared by me or under my direct personal supervision and that I am a duly licensed land surveyor under the laws of the state of Iowa.

*Larry D. Hyler*  
 5-29-2013

Licensed Land Surveyor No. 14775  
 License Renewal Date: 31 Dec. 2014

SEAL



List Corners to be indexed

Corners	Section	Twp	Range
W1/4 CORNER	3	77N	20W
SW CORNER	3	77N	20W

PL \$700 dk - Ret Larry Hyler

Found Granit rock 14"x8"x3"  
 over 2-2" round Tile.  
 Right where we set c.m.

set c.m. over 1-2" round Tile  
 Lowered in Place  
 Stone on Top c.m.

31.5' N.E. of x Nails in 26" walnut  
 39.4' N.E. " " " " 14" Elm  
 23.0' S.E. " " " " 16" "  
 46.5' S.W. " " " " 8" "  
 22.5' North " " " " 14" "  
 12.5' West of E North  
 13.0' North of " West

N.E. Cor sec 9-77-20

Set - 8-31-40

Notes: Kennedy - Wells, Crozier  
 Burrus & Hewitt.

