

Found Cement slab 15"x6"x2" on
 Top of Green Rock 12"x7"x6"
 Lowered Rock in Position.

Set C. Moun., Cement slab on
 North side Level with Top C.M.

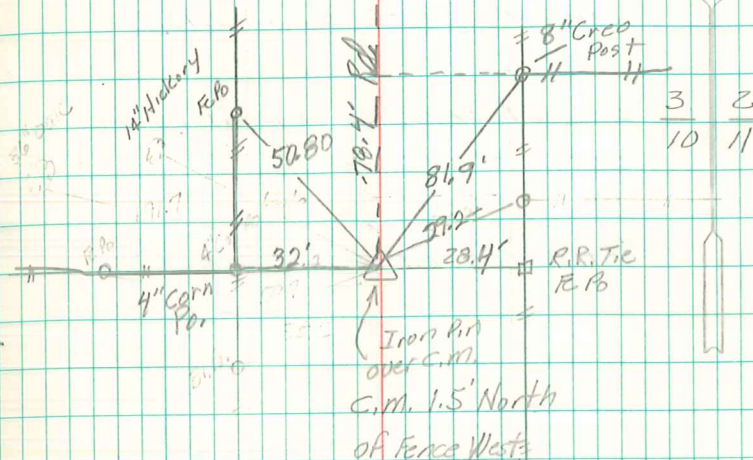
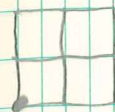
C.M. 15" under Surface,
 C.M. 12' North of Fence Line
 East & West.

S.W. Col. Sec. - 2-77-21

Set Sept - 10 - 1940

Notes: MANDELL

Revised 4/27/99



Retied Jan. 15 - 1970

4/27/99

Abie Davis