

C.M. 1 Foot North of Line cor Pa West.

Found 4" Hole Filled With Cement & Rock. South East of that was a Limestone Rock 13"-11"-2", on North West Corner of Rock was a $\frac{1}{2}$ " IRON Bolt 38" Long, South of that was ANOTHER Large Rock.

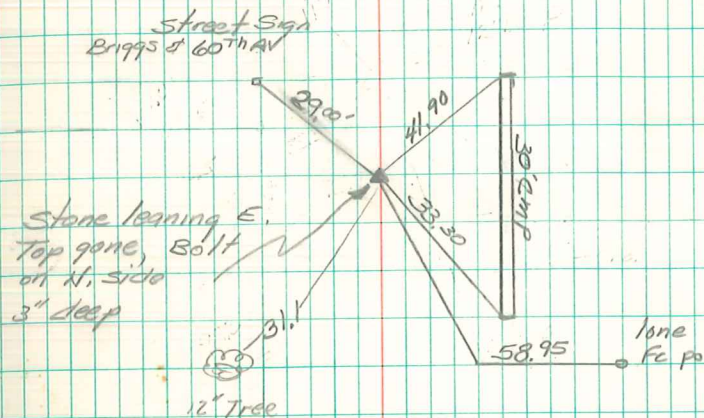
Set C.M. Put Bolt on North side of C.M. Both stones on North side of C.M.

C.M. 12" UNDER Surface.

E 1/4 Cor sec 11-77-21

Set: Sept-6-1940

Notes: MANDELL



Found Jan. 16-1970

Found & Rehid

Nov. 4, 1993

3/19/00 Neil T. Guess