

Found small sandstone 9"x6"x3"
on top of 2-2" round tile

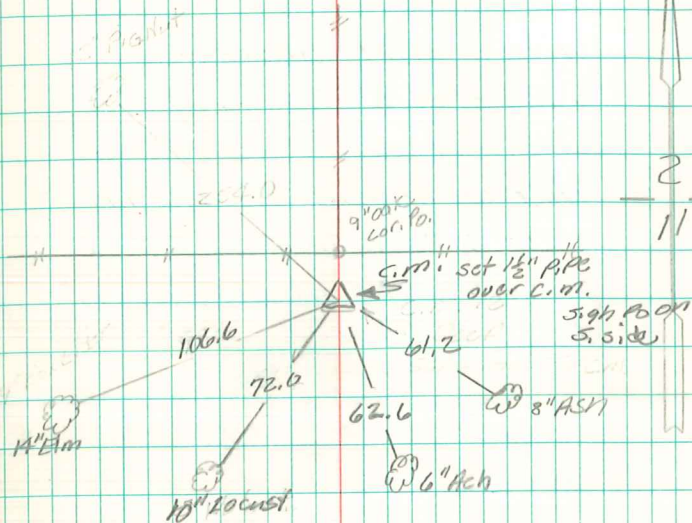
Lowered one tile in position
& set C.M. on top.

C.M. 12" under surface with
stone on top C.M.

N 1/4 Col. Sec 11-77-21

Set - Sept - 10 - 1940

Notes: Mandell



Found & Retab
April - 22 - 1980

Found small sandstone 9"x6"x3"
on top of 2-2" round tile

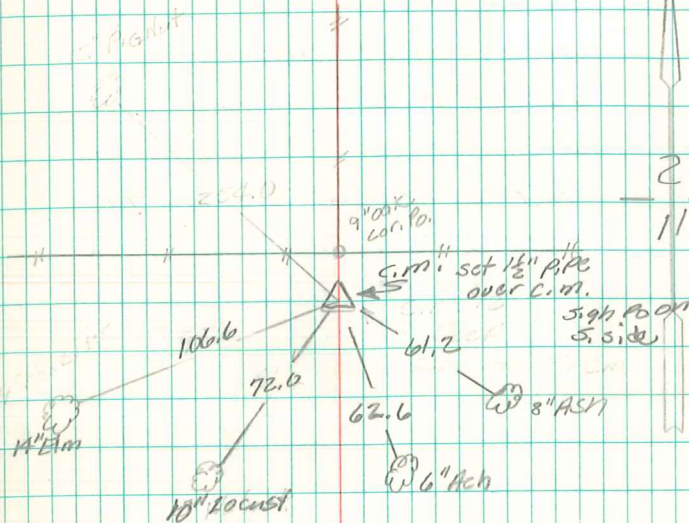
Lowered one tile in position
& set C.M. on top.

C.M. 12" under surface with
stone on top C.M.

N¹/₄ Col. Sec 11-77-21

Set - Sept - 10 - 1940

Notes: Mondell



Found & Retab
April - 22 - 1980