



Document 19-1781

Book 2019 Page 1781 Type CORNR Pages 1
Date 5/13/2019 Time 9:17 AM
Rec Amt \$7.00

KAREN SCHWANEBECK, RECORDER
MARION COUNTY IOWA

Prepared by Abie C. Davis, P.E. & L.S., 1428 Oregon St., Knoxville, IA 50138 (641) 842-5863

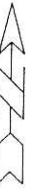
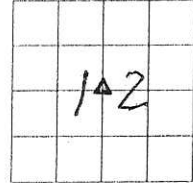
UNITED STATES PUBLIC LAND SURVEY CORNER CERTIFICATE OF

Land survey Monuments situated in Section 12, Township 77N, Range 21W, of the Fifth Principal Meridian, Marion County, Iowa.

Previously recorded in N/A in County Recorders Office.

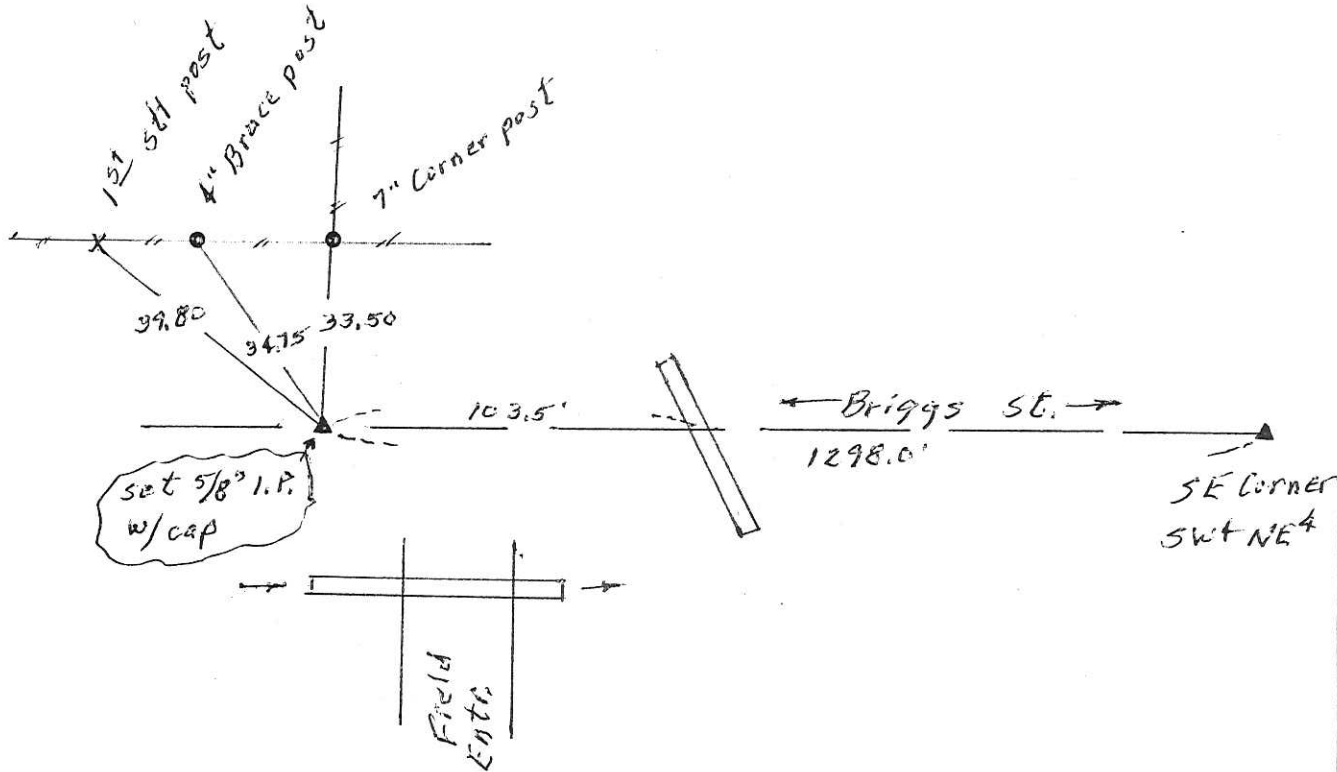
Show reason for preparing this certificate, the evidence and detailed procedures used in establishing the corner positions and monumentation found or placed (book, page, document number, etc.)

Monument Description and Remarks: set corner on E road and in line with fence north.



PLAN - VIEW

(Show a minimum of three reference ties to durable physical objects, relevant monuments and physical conditions that will enable recovery of the corner.)



I hereby certify that the survey work was completed and this land surveying document was prepared by me or under my direct personal supervision and that I am a duly licensed land surveyor under the laws of the state of Iowa

Signature: Abie C. Davis

Abie C. Davis, P.E. & L.S.

Date: 5/10/19 Reg. No. 5594

My license renewal date is December 31, 2019

SEAL



List Corners to be Indexed

| Corners | Section | Twp | Range |
|-----------|---------|-----|-------|
| SW Corner | 12 | 77N | 21W |
| SW NE 4 | | | |

Add \$100 Cash - Ref Abie Davis