

Found 2-3" Drain Tile Filled
With Concrete.
Right where we set c.m.

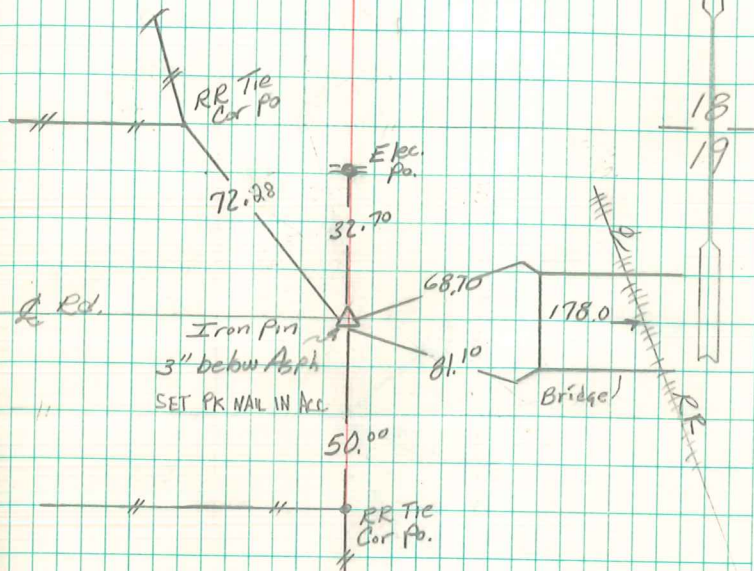
set c.m. on top of tile
& Put Granit Rock 14"x8"x4" on
Top c.m.

332' S.E. of X Nail in 8" locust corlo
33.0 N. " " " " 12 oak " "
64.2 S.E. " " " " Tele Po.
251.5 S.W. " " " " " "

N $\frac{1}{4}$ cor sec. 19-77-21

Set 10-21-41

Notes: Kennedy, Wells, Shore
& Bigelow



Revised 2/29/92
Abie Davis

REVISED 8/7/2001
D. MORGAN & B. HATCH