

Found 2-3" Drain tile Filled:  
With Concrete & Rock.  
Right where we set mon.

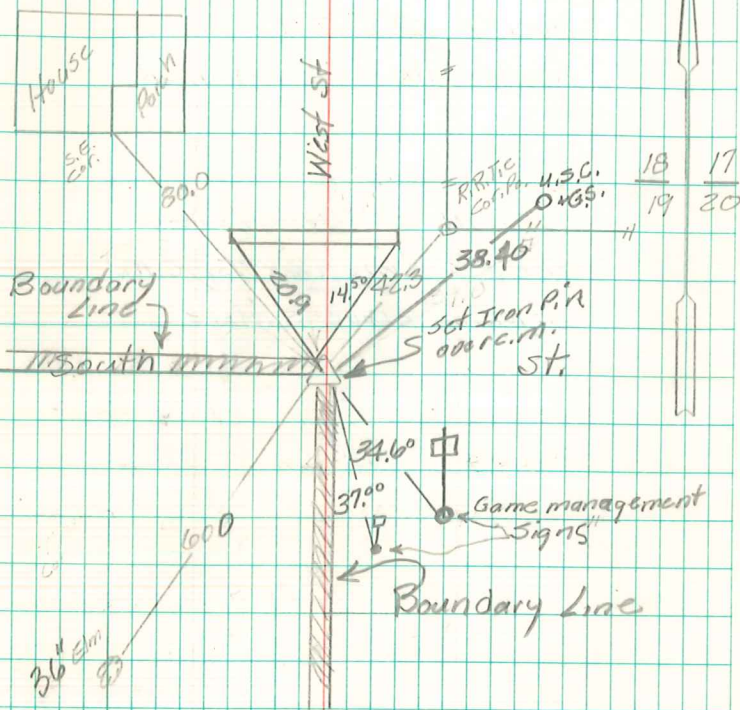
Set c.m. over 1-3" tile  
Lowered in place, top mon  
12" under surface.

N.E. Cor. Sec. 19-77-21

Set 10-3-1940

Notes: Kennedy, Shore & Mitchell

27



Retied By Corps Eng.  
April 12-79  
Lang, Breat & Meeker

Retied 2/29/92