



Document 19-95

Book 2019 Page 95 Type CORNR Pages 1
Date 1/09/2019 Time 10:05 AM
Rec Amt \$7.00



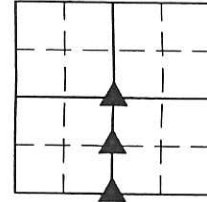
GARDEN & ASSOC.

P.O. Box 451, Oskaloosa, Iowa 52577-0451 Phone: (641)672-2526

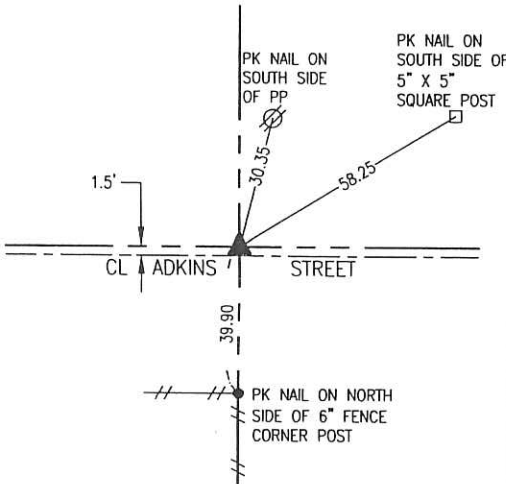
KAREN SCHWANEBECK, RECORDER
MARION COUNTY IOWA

UNITED STATES PUBLIC LAND SURVEY CORNER CERTIFICATE
OF

Land Survey Monuments situated in Section 1, Township 77, Range 21, of the Fifth Principal Meridian, MARION County, Iowa.
Previously recorded in N/A in County Recorder's Office.
Monument Description and Remarks: SEE BELOW



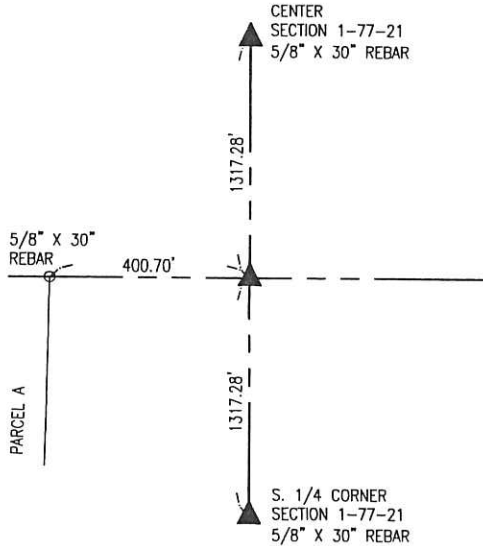
CENTER



NOV. 27, 2018:

SET 5/8" X 30" REBAR ON LINE BETWEEN W 1/4 CORNER AND E 1/4 CORNER IN LINE WITH FENCE LINE SOUTH.

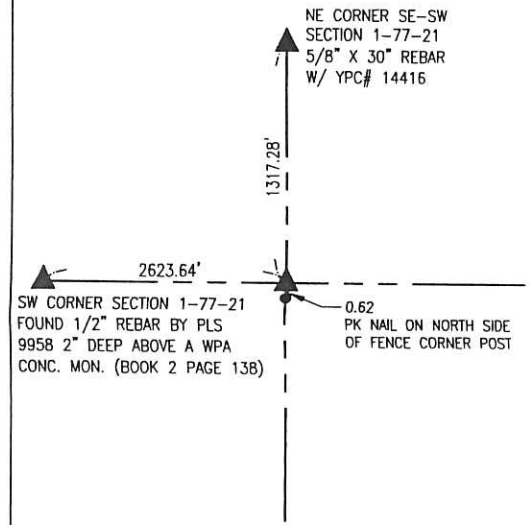
NE COR. SE-SW



NOV. 27, 2018:

SET 5/8" X 30" REBAR ON LINE AND MIDWAY BETWEEN CENTER AND S. 1/4 CORNER.

S. 1/4 COR.



NOV. 27, 2018:

SEARCHED THOROUGHLY FOR WPA CONCRETE MONUMENT BUT DID NOT FIND IT. SET 5/8" X 30" REBAR ON NORTH SIDE OF OLD FENCE CORNER POST PER 1940 WPA REFERENCE TIES.

I hereby certify that this land surveying document was prepared and the related survey work was performed by me or under my direct personal supervision and that I am a duly licensed Professional Land Surveyor under the laws of the State of Iowa.

Randal J. Nugteren December 28, 2018
Randal J. Nugteren, P.L.S. Date

License number: 14416

My license renewal date is December 31, 2018

SEAL



List Corners to be Indexed			
Corners	Section	Township	Range
CENTER	1	77	21
NE COR. SE-SW	1	77	21
S. 1/4 COR.	1	77	21

Pd. \$ 700.00 - Ret. Co. Garden & Assoc. env