

Found Granit Rock 14'x8'x5"
and tile under it.
Top Rock 4 1/2' Deep, set
C.M. TOP of Rock.

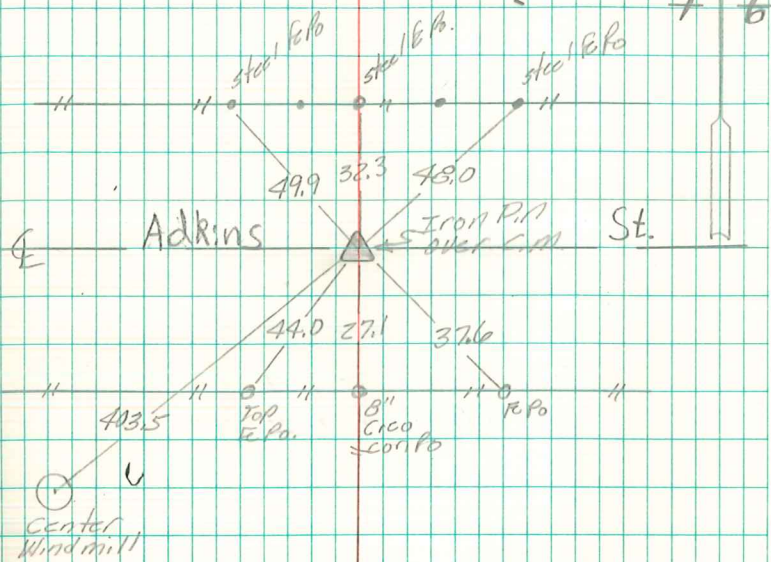
403.5 N.E. of center Windmill
49.9 S.E. " Steel E.Po
32.2 S. of " " "
48.0 S.W. of " " "
27.1 N. " x Marks in 8" Cor. Po.

E. 1/4 Cor Sec 1-77-21

Set - 9-11-40

Notes: Kennedy, Mandell

12



Found & Retied
11/20/02