

Found sandstone 18"x10"x6"  
over 2-1/2" tile, Broke one  
tile getting them out.

Right where we set man.

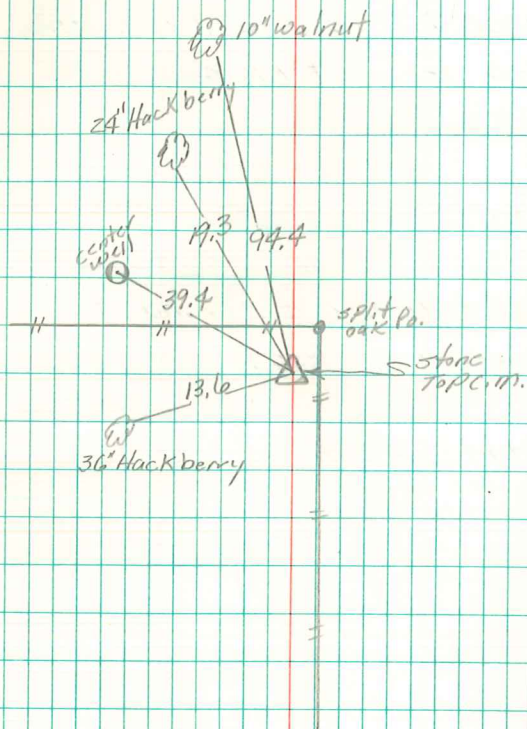
Set C.M. on one piece tile  
Lowered in place.

Stone on top C.M. sticking  
out above surface.

N.E. Col sec 25-77-21

Set 12-5-1940

Notes: Kennedy, Shore  
Mitchell & Sharp.



24 19  
25 20