

True corner

Found 3-2½" tile one whole
tile, the other two broken

Right where we set C.M.

Witness corner.

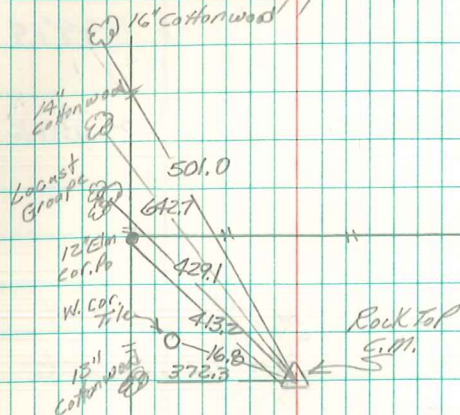
Found 2-3" tile filled with
broken brick.

set C.M. on whole tile lowered
in place, put rock on top C.M.
sticking above top surface.

N.E. Cor Sec 26-77-21

set 12-6-1940

Notes: Kennedy, Shore & Mitchell



23 24
26 25