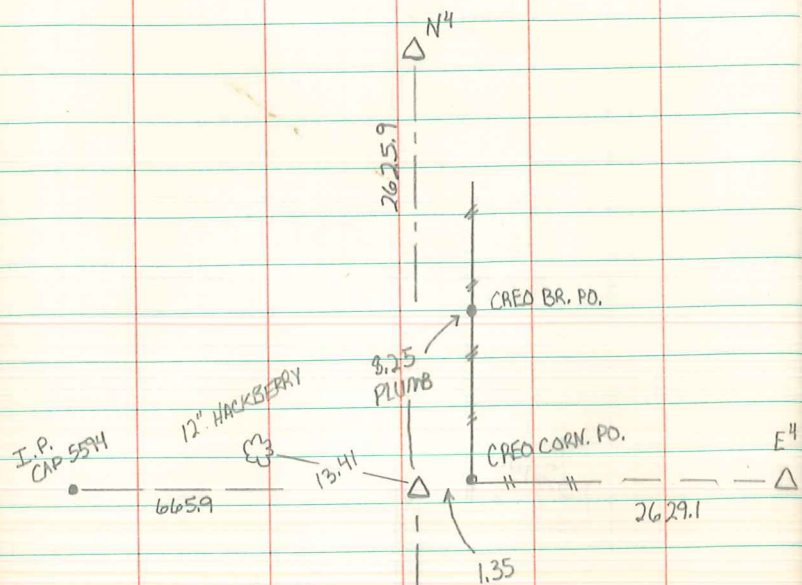


CENTER SECTION 27-77-21



FOUND 1/2" I.P. CAP 12846 15"  
 BELOW SURFACE OF PONDED WATER  
 IN DITCH. SET 1" PIPE ON  
 SOUTH SIDE OF PIN 20" ABOVE  
 WATER SURFACE.

Δ<sub>54</sub>

RETIED 9-12-11  
 ABIE C. DAVIS