

Instr. Number: 23-5176  
 BK: 2023 PG: 5176  
 Recorded: 12/14/2023 at 8:34:03.0 AM  
 County Recording Fee: \$7.00  
 Iowa E-Filing Fee: \$3.13  
 Combined Fee: \$10.13  
 Revenue Tax:  
 NAOMI ELLIS, RECORDER  
 Marion County, Iowa

PREPARED BY & RETURN TO: STEPHEN L. ZIMMERMAN II / McCLURE / 1360 NW 121ST STREET, CLIVE, IA 50325 / 515-964-1229

## U.S. PUBLIC LAND SURVEY CORNER CERTIFICATE

**REASON FOR PREPARING THIS CERTIFICATE:**

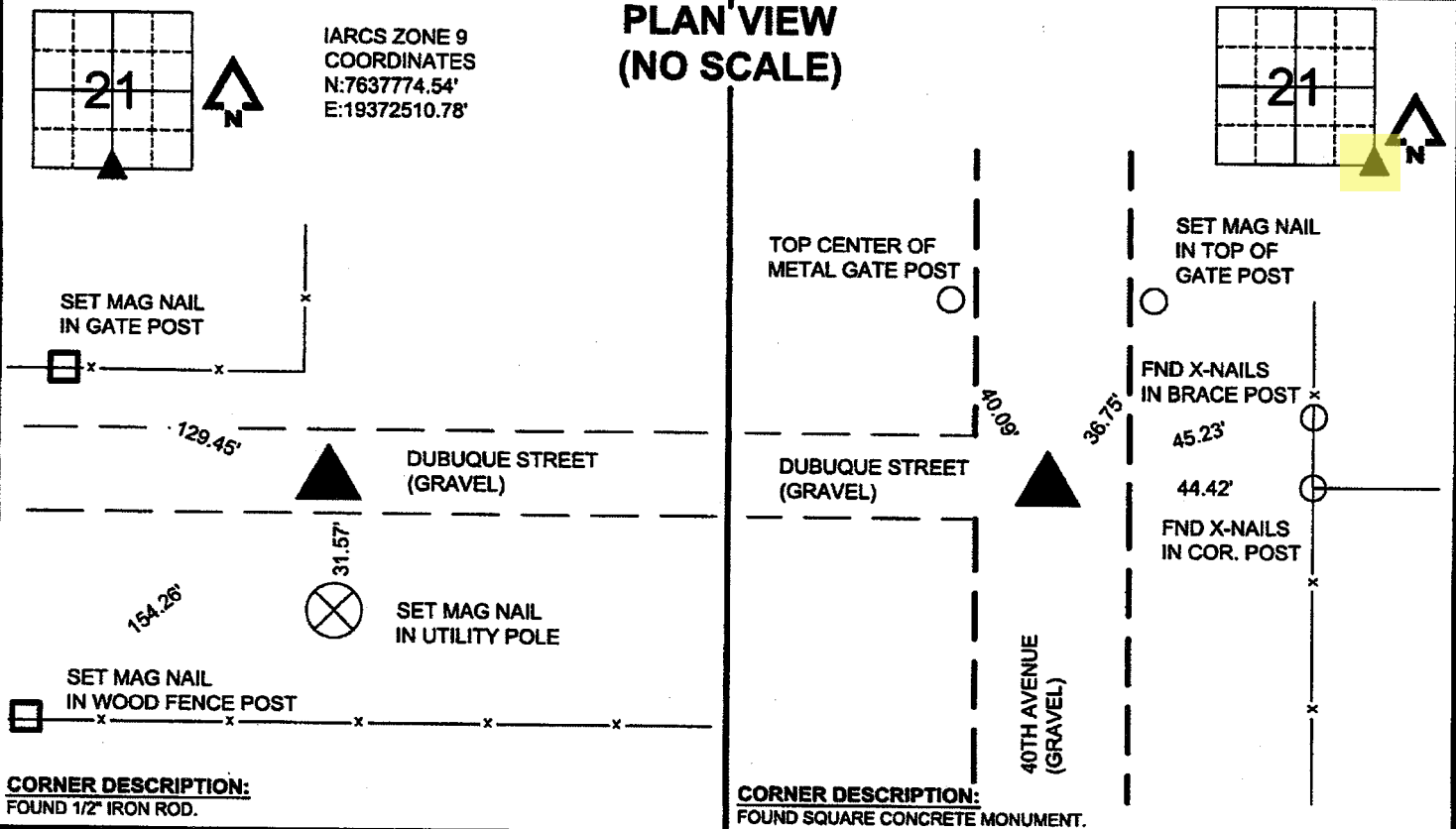
- CORNER RESTORATION (ACCEPTED OR PERPETUATED CORNER)
- CORNER ESTABLISHMENT (PLSS CORNER CREATED, BUT NOT MONUMENTED IN THE ORIGINAL SURVEY)
- CORNER REESTABLISHMENT (LOST CORNER)

LAND SURVEY MONUMENT(S) SITUATED IN SECTION 21, TOWNSHIP 77 NORTH, RANGE 21 WEST OF THE 5th PRINCIPAL MERIDIAN, MARION COUNTY, IOWA. THIS WORK WAS DONE AS PART OF A PLAT OF SURVEY

**SE CORNER:** THE SECTION CORNER MONUMENT AS SHOWN IN THE MARION COUNTY ENGINEER'S TIES AND RETIED IN 1996 WAS FOUND AND ACCEPTED. AS NONE OF THE OLD TIES WERE RECOVERED, NEW TIES WERE SET AS SHOWN BELOW.

**S1/4 CORNER:** THE SECTION CORNER MONUMENT AS SHOWN IN THE MARION COUNTY ENGINEER'S TIES AND RETIED IN 1985 WAS FOUND AND ACCEPTED. THE MONUMENT WAS ALSO RECOVERED IN A PLAT OF SURVEY RECORDED IN BOOK 206 PAGE 36. AS NONE OF THE OLD TIES WERE RECOVERED, NEW TIES WERE SET AS SHOWN BELOW.

### PLAN VIEW (NO SCALE)

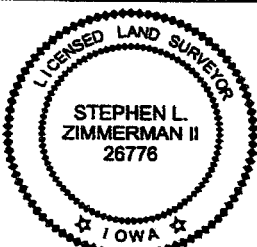


### CORNERS TO BE INDEXED

CORNER	SEC.	TWP.	RGE.
NORTHEAST	28	T77N	R21W
SOUTHEAST	21	T77N	R21W
SOUTHWEST	22	T77N	R21W
NORTHWEST	27	T77N	R21W
SOUTH 1/4	21	T77N	R21W
NORTH 1/4	28	T77N	R21W



335 SE Orallabor Road  
 Ankeny, Iowa 50021  
 515-512-1361  
 fax 515-964-2370



I HEREBY CERTIFY THAT THIS LAND SURVEYING DOCUMENT WAS PREPARED AND THE RELATED WORK WAS PERFORMED BY ME OR UNDER MY DIRECT PERSONAL SUPERVISION AND THAT I AM A DULY LICENSED LAND SURVEYOR UNDER THE LAWS OF THE STATE OF IOWA.

STEPHEN L. ZIMMERMAN II  
 MY LICENSE RENEWAL DATE IS DECEMBER 31, 2024

PAGES OR SHEETS COVERED BY THIS SEAL: THIS PAGE ONLY

DATE SURVEYED: 12/11/2023

12/13/23  
DATE

DRAWING PATH: P:\2023001574-000 - McCarty Plat of Survey - ANK\04-Drawings\Survey\CC.dwg PLOT DATE: 12/13/2023 2:08 PM PLOTTED BY: STEVE ZIMMERMAN

Found Granit Rock  $6'' \times 6'' \times 3''$   
& oak Hub  $2'' \times 2''$

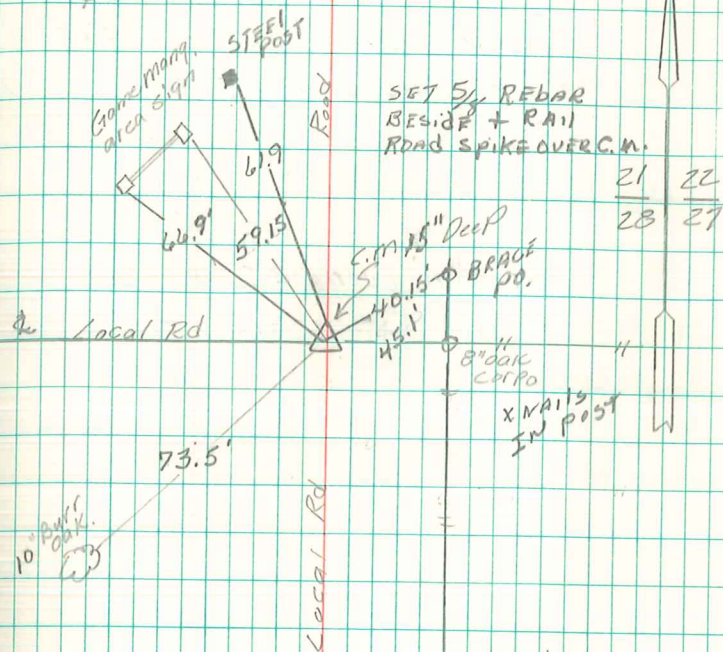
Set C.M. over  $1-2''$  tile  
standing on END.

Granit Rock on Top C.M.

N.E. Col Sec 28-77-21

Set 9-24-41

Notes: Kennedy, Well, Burrus  
& Glass



21	22
28	27

Retied  
April 4 1972

RETIED 6-21-89  
D.M. HILLER

3/26/96  
Abie Davis