



Document 17-354

Book 2017 Page 354 Type CORNR Pages 1  
Date 1/23/2017 Time 10:54 AM  
Rec Amt \$7.00

KAREN SCHWANEBECK, RECORDER  
MARION COUNTY IOWA

Prepared by Abie C. Davis, P.E. & L.S., 1428 Oregon St., Knoxville, IA 50138 (641) 842-5863

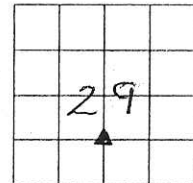
### UNITED STATES PUBLIC LAND SURVEY CORNER CERTIFICATE OF

Land survey Monuments situated in Section 29, Township 77N, Range 21W, of the Fifth Principal Meridian, Marion Co. County, Iowa.

Previously recorded in Book 2007, Page 2747 in County Recorders Office.

Show reason for preparing this certificate, the evidence and detailed procedures used in establishing the corner positions and monumentation found or placed

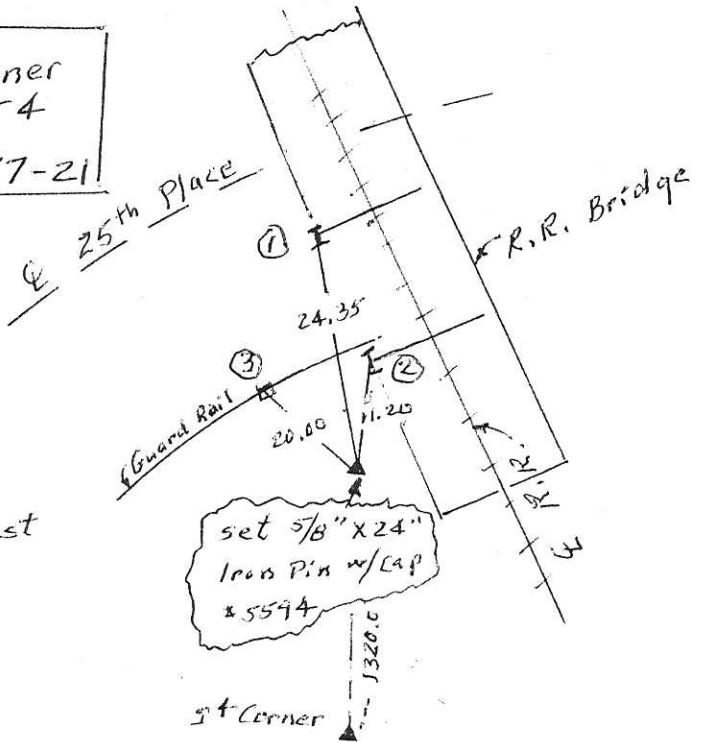
Monument Description and Remarks: R.R. bridge was rebuilt in 2015 or 2016 disturbing previous ties. Did not find 1" pipe previously set. Reset corner from info. from 2007 survey (Book 2007, Page 2746).



### PLAN - VIEW

(Show a minimum of three reference ties to durable physical objects, relevant monuments and physical conditions that will enable recovery of the corner.)

NW Corner  
SW4 SE4  
Sec. 29-77-21



- ① Top of channel beam at H pile
- ② " " " " " "
- ③ X nail on top 6"X6" Guard Rail post (all slope distances)

I hereby certify that the survey work was completed and this land surveying document was prepared by me or under my direct personal supervision and that I am a duly licensed land surveyor under the laws of the state of Iowa

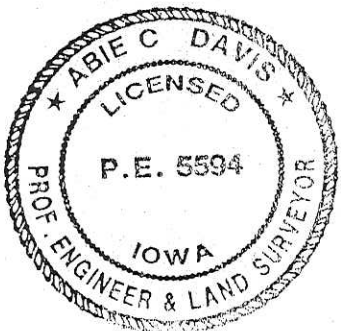
Signature: Abie C. Davis

Abie C. Davis, P.E. & L.S.

Date: 1/12/2017 Reg. No. 5594

My license renewal date is December 31, 2017

SEAL

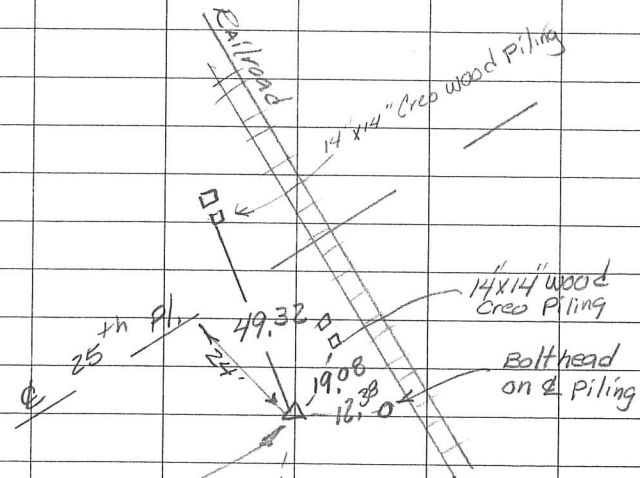


List Corners to be Indexed			
Corners	Section	Twp	Range
NW Corn,	29	77N	21W
SW4 SE4			

R/S 700 CRASH - For Abie Davis

NE COR SE<sup>4</sup> SW<sup>4</sup>

SEC 29-77-21



Iron Pipe  
w/CAP # 5594

SW<sup>4</sup>

2632.5

1320

SW<sup>4</sup>

Set COR 1320' North of the S  
1/4 line.

Abie Davis

5/30/07