

Instr. Number: 23-3600
 BK: 2023 PG: 3600
 Recorded: 8/29/2023 at 9:29:47.0 AM
 County Recording Fee: \$7.00
 Iowa E-Filing Fee: \$3.13
 Combined Fee: \$10.13
 Revenue Tax:
 NAOMI ELLIS, RECORDER
 Marion County, Iowa

PREPARED BY & RETURN TO TERRY COADY, SNYDER & ASSOCIATES, INC. 2727 SW SNYDER BLVD, ANKENY, IOWA 50023 (515) 964-2020

UNITED STATES PUBLIC LAND SURVEY CORNER CERTIFICATE OF

Land Survey Monuments situated in Section 20, Township 77, Range 21, West of the Fifth Principal Meridian, MARION County, Iowa. Previously recorded in Book 2002, Page 305 in County Recorder's Office.
 (book, page, document number, ect.)

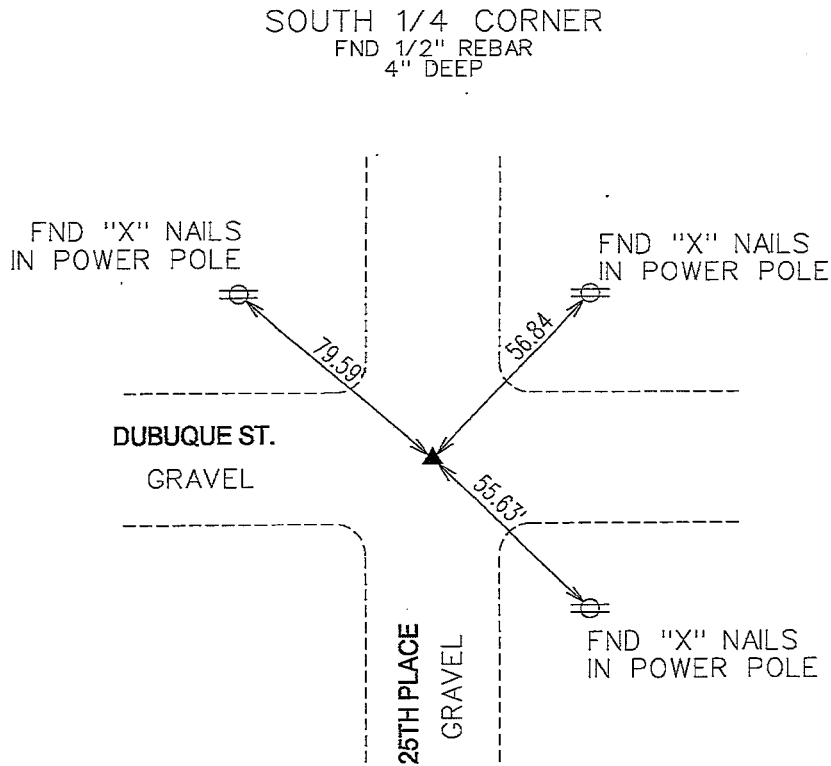
(Show reason for preparing this certificate, the evidence and detailed procedures used in establishing the corner positions and monumentation found or placed.)

Monument Description and Remarks:

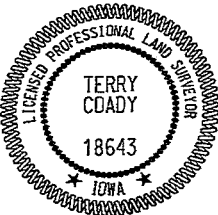
THE EXISTING CORNER CERTIFICATE RECORDED IN BOOK 2002 PAGE 305 OF THE MARION COUNTY RECORDER'S OFFICE INDICATED THAT THE SOUTH 1/4 CORNER IS MONUMENTED WITH A 3/8" IRON PIN OVER CONCRETE MONUMENT. SEARCHED AREA USING EXISTING TIES AND A METAL DETECTOR AND FOUND 1/2" REBAR 4" DEEP. SAID MONUMENT CHECKS WITH PRIOR DIMENSIONS TO THE CENTER OF SECTION 20-77-21. THIS CERTIFICATE HAS BEEN PREPARED BECAUSE THERE ARE NO LONGER THREE VALID TIES OF RECORD.

Plan-View

(Show a minimum of three reference ties to durable physical objects, relevant monuments and physical conditions that will enable recovery of the corner.)



NOTE: ALL DISTANCES MEASURED HORIZONTAL UNLESS OTHERWISE NOTED.



I hereby certify that this land surveying document was prepared and the related survey work was performed by me or under my direct personal supervision and that I am a duly licensed Professional Land Surveyor under the laws of the State of Iowa.

Terry Coady 8-29-2023
 Terry Coady, Date

License Number 18643
 My License Renewal Date is December 31, 2023

Pages or sheets covered by this seal:
SHEET 1 OF 1

List Corners to be Indexed			
Corners	Section	Twp	Range
S 1/4	20	77	21
N 1/4	29	77	21

TECH: JDP

PN: 123.1016

DATE: 8-16-23

Found Iron Pin between two
stakes.
Right where we set c.m.

set c.m. over 1-2" ϕ tile standing
on end. Iron Pin in concrete tile
Put a Lime Rack 8"x5"x2" on top, c.m.

N. $\frac{1}{4}$ Cor Sec. 29-77-21

Set 9-23-41

Notes: Kennedy, Wells, Burrus
E Glass.

