



PREPARED BY
AND RETURN THIS ORIGINAL DOCUMENT TO:
ANTHONY F. HILDRETH
IOWA DEPARTMENT OF TRANSPORTATION
DISTRICT ONE OFFICE
1020 SOUTH 4TH STREET
AMES, IOWA 50010
PHONE 515-239-1231

RESERVED FOR COUNTY RECORDER'S USE

Document 22-4018
Book 2022 Page 4018 Type CORNR Pages 1
Date 7/25/2022 Time 11:22 AM
Rec Amt \$7.00

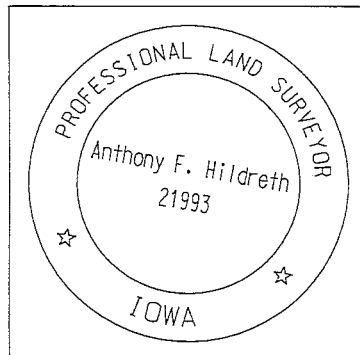
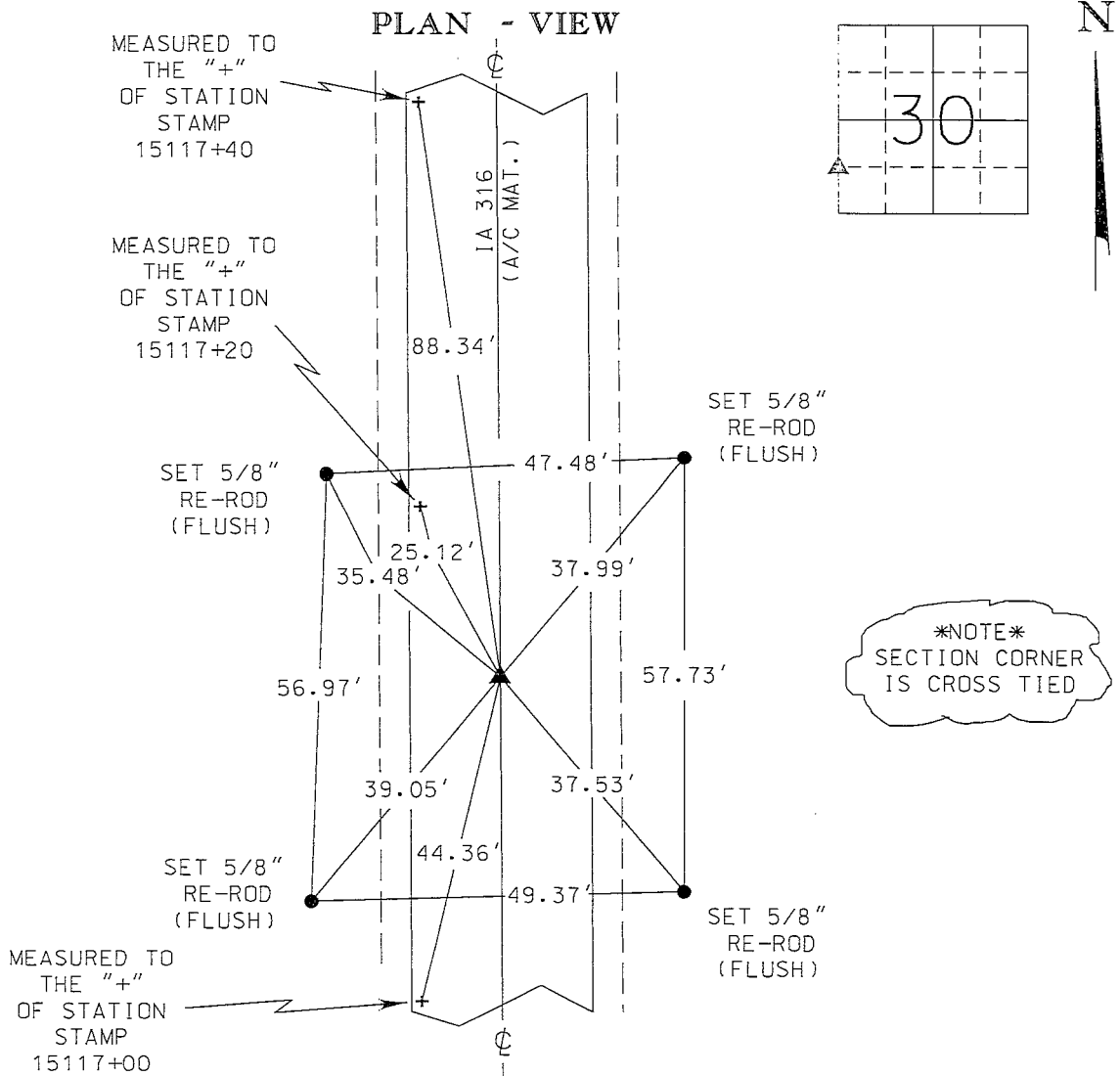
NAOMI ELLIS, RECORDER
MARION COUNTY IOWA

UNITED STATES PUBLIC LAND SURVEY CORNER CERTIFICATE

Land Survey Monument(s) situated in Section 30, Township 77 North, Range 21 West, of the Fifth Principal Meridian, MARION County, Iowa.

Previously recorded in BOOK 2 PAGE 68 & FEE BOOK 2013-4368 in the WARREN County Recorder's Office.

Monument Description and Remarks: FOUND A 1/2" RE-ROD WITH CAP REMAINS IN THE CONCRETE SLAB PRIOR TO I.D.O.T. HMA RESURFACING PROJECT STPN-316-1(10)--2J-91 BY USING PREVIOUSLY RECORDED WARREN COUNTY CORNER CERTIFICATES PREPARED BY MATTHEW J. THOMAS (FEE BOOK 2013-4368) AND HENRY S. OAKES (BOOK 2 PAGE 68). ACCEPTED SAID 1/2" RE-ROD AS THE SECTION CORNER MONUMENT FOR THE NW CORNER SW 1/4 SW 1/4 OF SECTION 30-77N-21W. THE POSITION WAS PRESERVED BY REDUNDANT GPS RTK OBSERVATIONS. SAID 1/2" RE-ROD SECTION CORNER MONUMENT WAS NOT DISTURBED BY SAID RESURFACING PROJECT. THIS CORNER CERTIFICATE WAS PREPARED BECAUSE THERE IS NOT A CORNER CERTIFICATE OF RECORD FOR THIS SECTION CORNER IN MARION COUNTY.



I hereby certify that this Land Surveying document was prepared by me or under my direct personal supervision and that I am a duly licensed Professional Land Surveyor under the laws of the State of Iowa.

Signature: [Signature]
Anthony F. Hildreth

Date: July 20, 2022 Lic. No. 21993
My license renewal date is December 31, 2023.
Pages or sheets covered by this seal. 1

Corner to be Indexed		
Corner		
NW COR. SW 1/4 SW 1/4		
Sec.	Twp.	Range
30	77N	21W
Drawn by: <u>BRW</u>		

Chg \$7.00 IDOT - Ret IDOT