



PREPARED BY  
 AND RETURN THIS ORIGINAL DOCUMENT TO:  
 ANTHONY F. HILDRETH  
 IOWA DEPARTMENT OF TRANSPORTATION  
 DISTRICT ONE OFFICE  
 1020 SOUTH 4TH STREET  
 AMES, IOWA 50010  
 PHONE 515-239-1231

RESERVED FOR COUNTY RECORDER'S USE

Document 22-4017  
 Book 2022 Page 4017 Type CORNR Pages 1  
 Date 7/25/2022 Time 11:21 AM  
 Rec Amt \$7.00

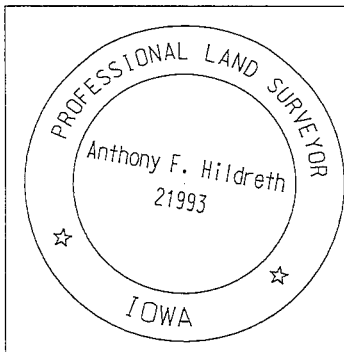
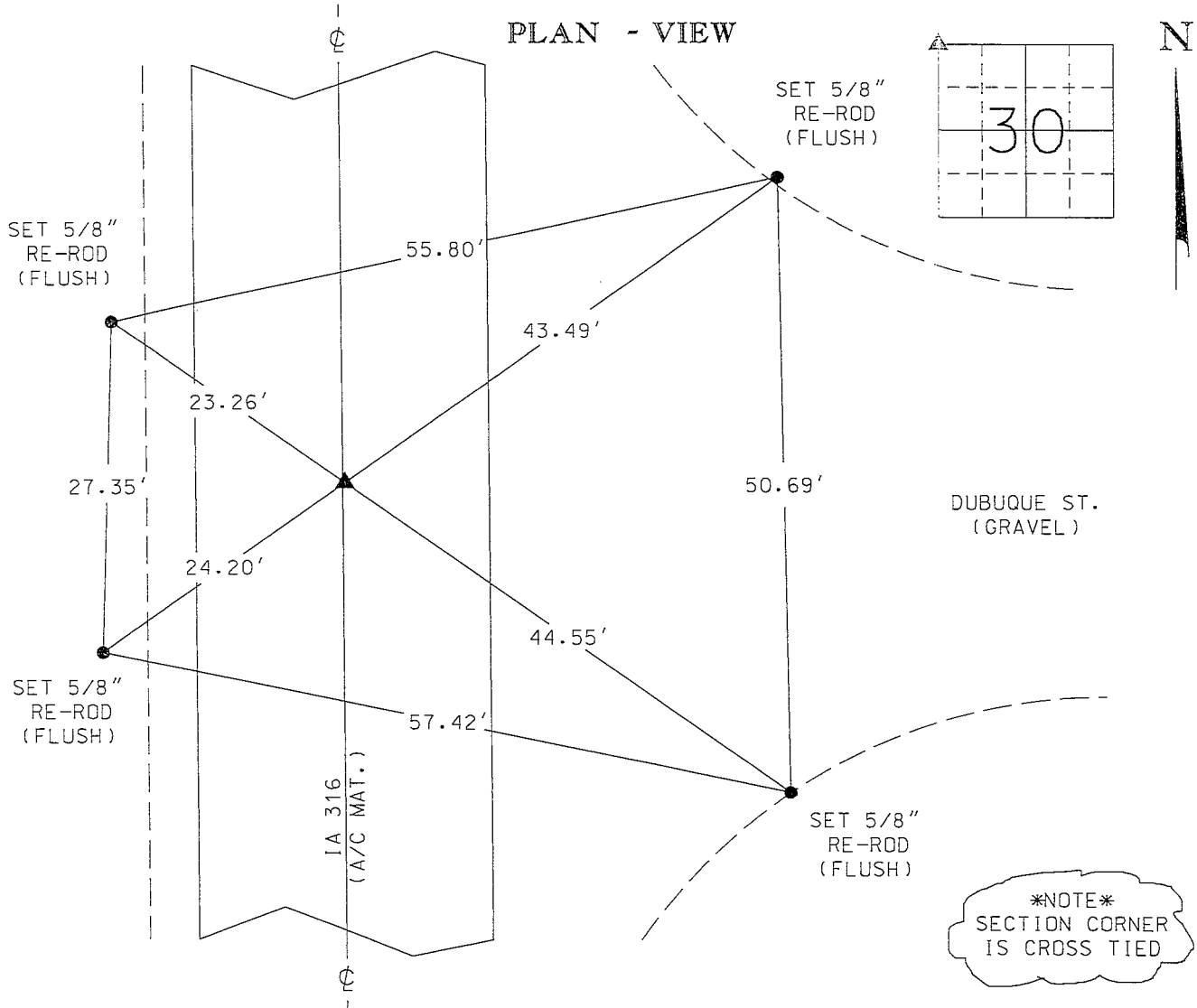
NAOMI ELLIS, RECORDER  
 MARION COUNTY IOWA

**UNITED STATES PUBLIC LAND SURVEY CORNER CERTIFICATE**

Land Survey Monument(s) situated in Section 30, Township 77 North, Range 21 West, of the Fifth Principal Meridian, MARION County, Iowa.

Previously recorded in BOOK 1 PAGE 52 & FEE BOOK 2016-6880 in the WARREN County Recorder's Office.

Monument Description and Remarks: FOUND A WARREN COUNTY DISK PRIOR TO I.D.O.T. HMA RESURFACING PROJECT STPN-316-1(10)--2J-91 BY USING TWO PREVIOUSLY RECORDED WARREN COUNTY CORNER CERTIFICATES PREPARED BY FRANKLIN A. NORTON (BOOK 1 PAGE 52) AND TERRY COADY (FEE BOOK 2016-6880). ACCEPTED SAID DISK AS THE SECTION CORNER MONUMENT FOR THE NW CORNER OF SECTION 30-77N-21W. THE POSITION WAS PRESERVED BY REDUNDANT GPS RTK OBSERVATIONS. AFTER HMA RESURFACING PROJECT A "SURVEY MARK" NAIL WAS SET AT THE PRESERVED POSITION AND CHECKED BY REDUNDANT GPS RTK OBSERVATIONS. THIS CORNER CERTIFICATE WAS PREPARED BECAUSE THE SECTION CORNER MONUMENT OF RECORD HAS CHANGED AND NEW REFERENCE TIES ADDED.



I hereby certify that this Land Surveying document was prepared by me or under my direct personal supervision and that I am a duly licensed Professional Land Surveyor under the laws of the State of Iowa.

Signature: [Signature]  
 Anthony F. Hildreth

Date: July 20, 2022 Lic. No. 21993  
 My license renewal date is December 31, 2023.  
 Pages or sheets covered by this seal. 1

Corner to be Indexed		
Corner		
NW COR.		
Sec.	Twp.	Range
30	77N	21W
Drawn by: <u>BRW</u>		

Chg #700 FDOT - Rest I DOT

Found 2-3" Drain Tile &  
1-2" O Tile & Sand Stone  
8"x4"x4"

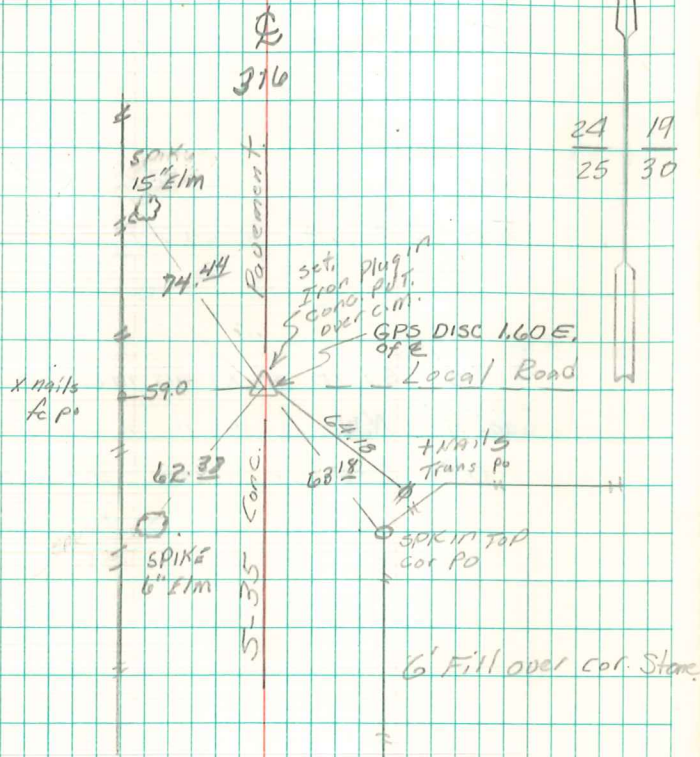
Set c.m. over 1-2" O tile lowered  
in place.

Stone on top c.m. Top c.m.  
12" under orig Road bed

N.W. Cor sec 30-77-21

Set -

Notes: Kennedy, Wells, Burris,  
Crozier & Hewitt.



New Trees sent From  
Warren Co. Eng.

Recorded Feb 5-1974

RETIRED to Mays by mail

IDOT  
2/21/95 Nick Davis