

Found 2-Pieces 3" Drain Tile
8" Long Top one Filled with Rock &
Concrete.

2-1 1/2" Q Tile one Filled with Concrete
Right Where we set man.

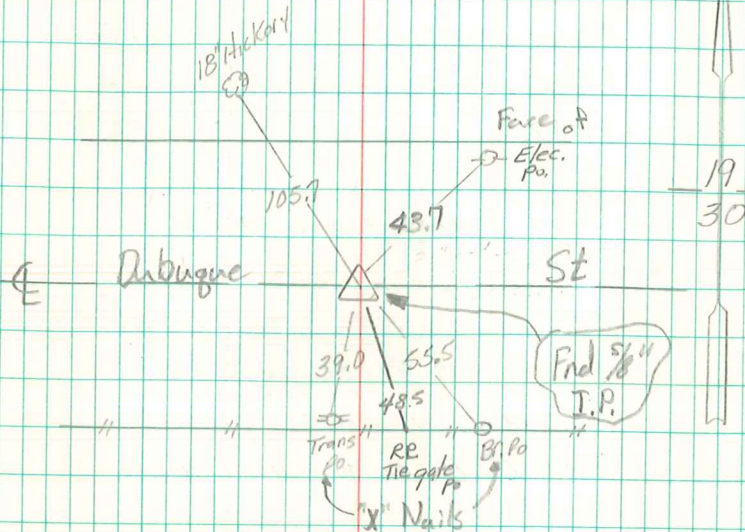
Set c.m. one on Q tile Lowered
in Place.

Top c.m. 14" Below Top Ground.

N. 1/4 Cor Sec 30-77-21

Set 10-3-1940

Notes: Kennedy, Mitchell &
Shore



Retied 2/27/92
10/8/96