

Found 2-2" Q tile.  
Right where we set man.

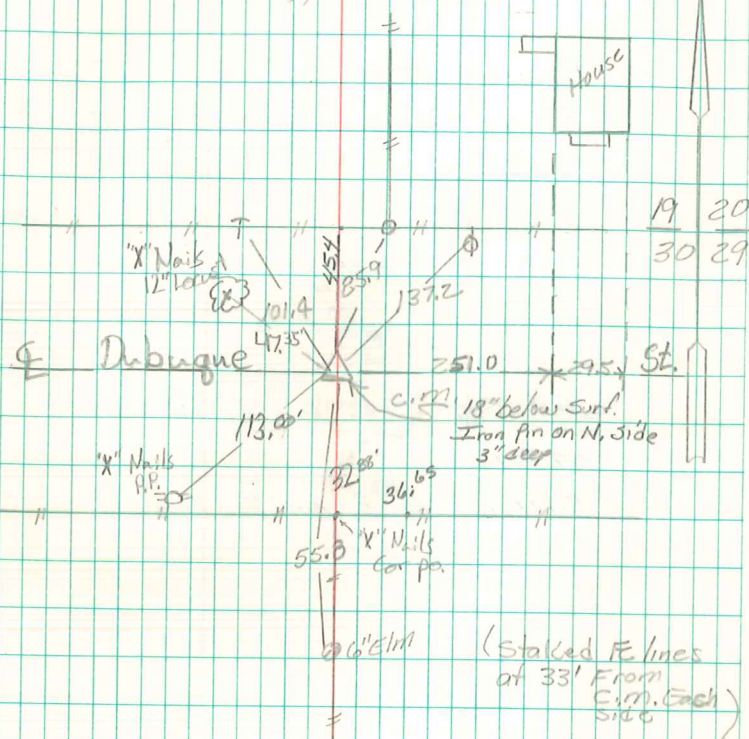
set c.m. over 1-2" Q tile  
Lowered in place.  
Top C.M. 16" Below Top of Ground  
Put some pieces China Wear  
& Glass on top C.M.

N.E. Cor Sec 30-77-21

Set - 10-3-90

Notes: Kennedy, Shure & Mitchell

29



Retied 2/27/92  
10/8/96