

Instr. Number: 24-970
 BK: 2024 PG: 970
 Recorded: 3/19/2024 at 8:10:24.0 AM
 County Recording Fee: \$7.00
 Iowa E-Filing Fee: \$3.13
 Combined Fee: \$10.13
 Revenue Tax: \$0.00
 NAOMI ELLIS, RECORDER
 Marion County, Iowa

UNITED STATES PUBLIC LAND SURVEY CORNER CERTIFICATE of

LAND SURVEY MONUMENTS SITUATED IN SECTION 32, TOWNSHIP 77 North, RANGE 21 West, of the Fifth Principal Meridian, Marion County, Iowa.

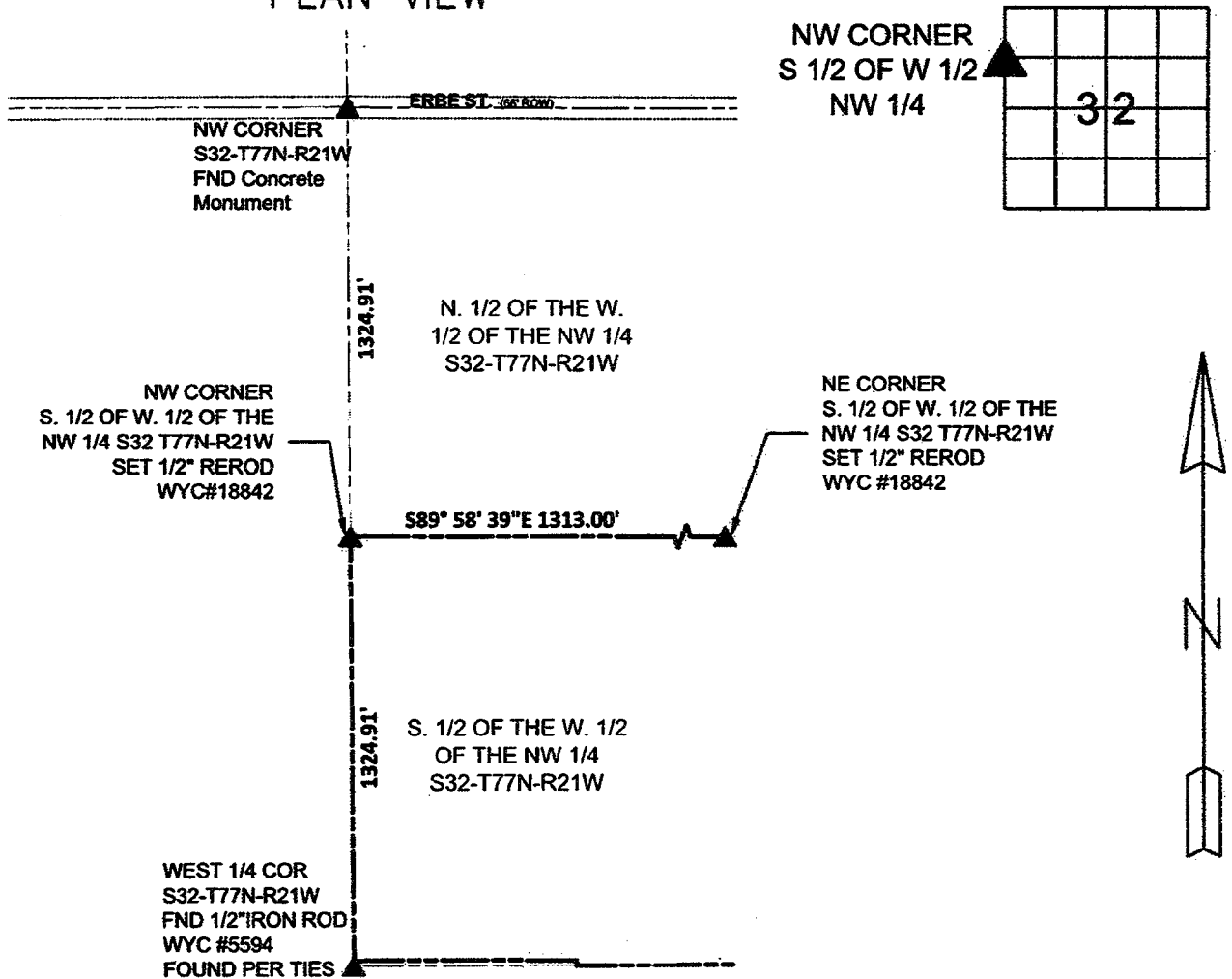
Monument Description & Remarks:

- NW CORNER OF THE SOUTH HALF OF THE WEST HALF OF THE NW 1/4 S32-T77N-R21W
SET 1/2" REROD WITH YELLOW CAP #18824

PREVIOUS TIES WERE NOT FOUND FOR THIS CORNER.

PLAN VIEW

Section 32-T77N-R21W



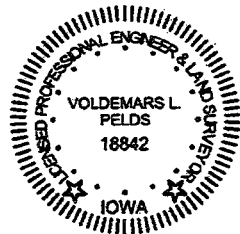
TIES TO NORTHWEST CORNER OF THE SOUTH 1/2 OF THE WEST 1/4 OF THE NW 1/4 S32-T77N-R21W

I HEREBY CERTIFY THAT THIS LAND SURVEYING DOCUMENT WAS PREPARED AND THE RELATED WORK WAS PERFORMED BY ME OR UNDER MY DIRECT PERSONAL SUPERVISION AND THAT I AM A DULY LICENSED PROFESSIONAL LAND SURVEYOR UNDER THE LAWS OF THE STATE OF IOWA.

Voldebars L. Pelds 3/19/2024
 VOLDEMARS LEO PELDS, P.L.S. IA. LIC. NO. 18842 DATE

MY LICENSE RENEWAL DATE IS DECEMBER 31, 2025

ADDITIONAL PAGES OR SHEETS COVERED BY THIS SEAL (NONE UNLESS INDICATED HERE):



Corners to be Indexed:			
Corner	Section	Twp	Range
NW Corner S. 1/2 of W. 1/2 NW 1/4	32	77	21

PREPARED BY: PELDS DESIGN SERVICES - 2323 DIXON STREET, DES MOINES, IOWA 50316 - PH. (515)265-8196

DRAWN BY: A. BRADFIELD