

Corner in Deep Road cut.

Dug hole 8' square Found Nothing,
Established by local Evidence
W. M. Viers, owner of 8 Res. on
Land Adj. on North & West for over
50 years stated he has seen stone
at this Point and is Satisfied it
is True Corner.

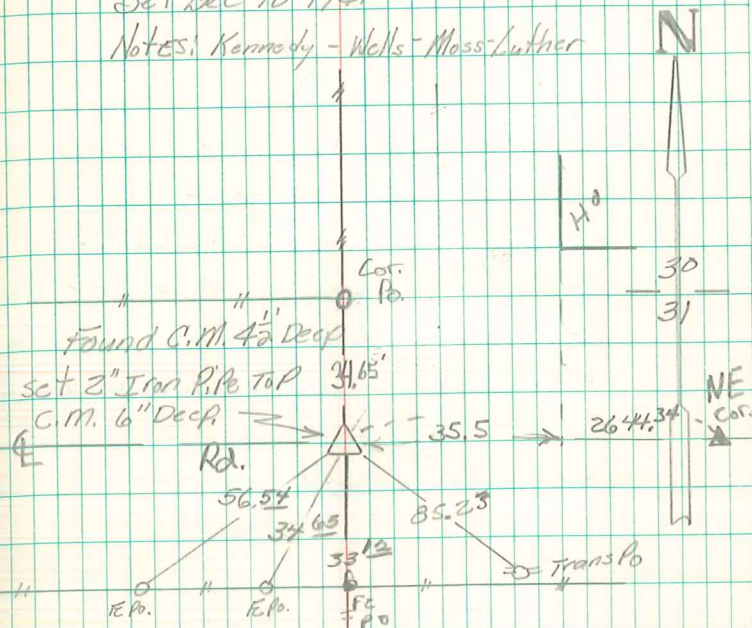
D. W. Martin, owner on South &
West stated his corner Post
Was set when stone was visible.

Set C.M. over 1-2" Round Tile, Put a
Granit Rock 12"x8"x5" on Top C.M.

N. 1/4 Cor Sec 31-77-21

Set Dec 10-1941

Notes: Kennedy - Wells - Moss - Luther



Found & Retied
July 12-1971

RETIED 3 May 93
I.D.O.T.

5/26/98 Abie Davis