

Found 2-Rocks one 18"x15"x4"  
 & one 14"x11"x3" over Piece building  
 Block. 6" south of 1 1/2" Gas Pipe  
 21" Long & some Pieces of 2" Pipe

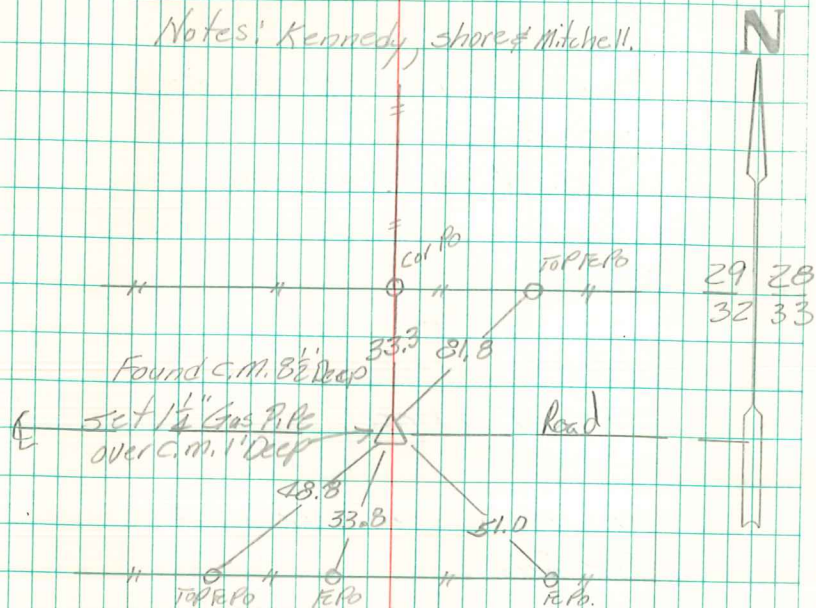
Right where we set Mar.

set C.M. where we Found Tile  
 block on Pieces of 2" R. Tile  
 Gas pipe on south side C.M.  
 Both Rocks on W. side C.M. at Top.

N.E. Cor sec 32-77-21

Set 10-8-90

Notes: Kennedy, shore & Mitchell.



Found & Retired  
 Aug-13-1971

Found 70# Spike over  
 1 1/4" Gas pipe over C.M.  
 12/2/96  
 Abie Davis