

Found sand stone 12"x8"x6"
over 2:2" tile.

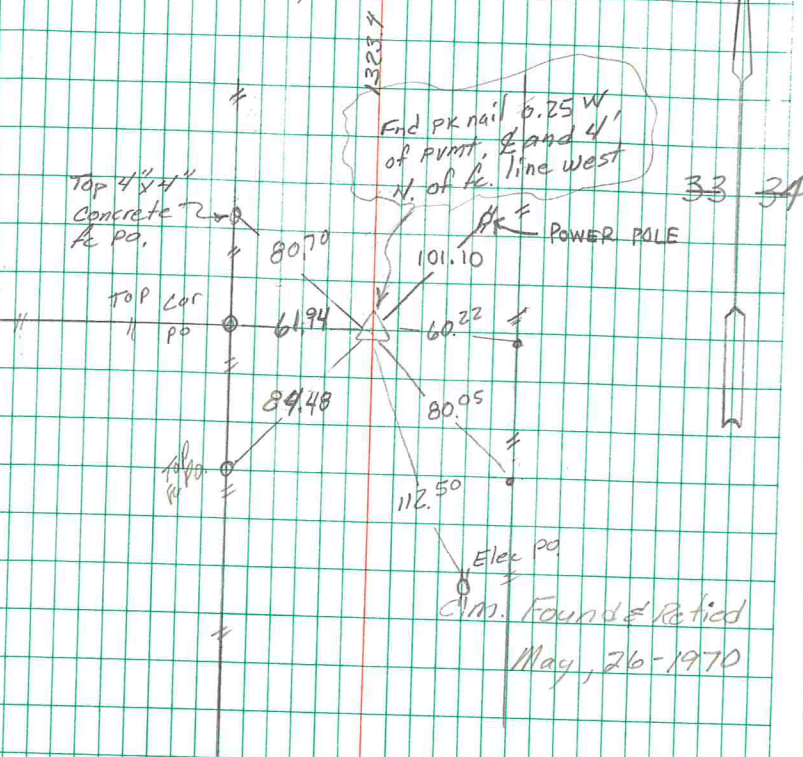
set C.M. over 1-2" tile
Lowered in Place.

Stone on top C.M.
Top mon 16" Below Road Bed

E/4 Col. 500. 33-77-21

Set - 10-9-1940

Notes: Kennedy, Wells, Prozier
& Burris, New, H.



Found & Retied

Sept. 11, 2002

Abie Davis

HATCH, SCHIPPERS 5/24/21

Found sand stone 12"x8"x6"
over 2-2" C tile.

set C.M. over 1-2" C tile
Lowered in Place.

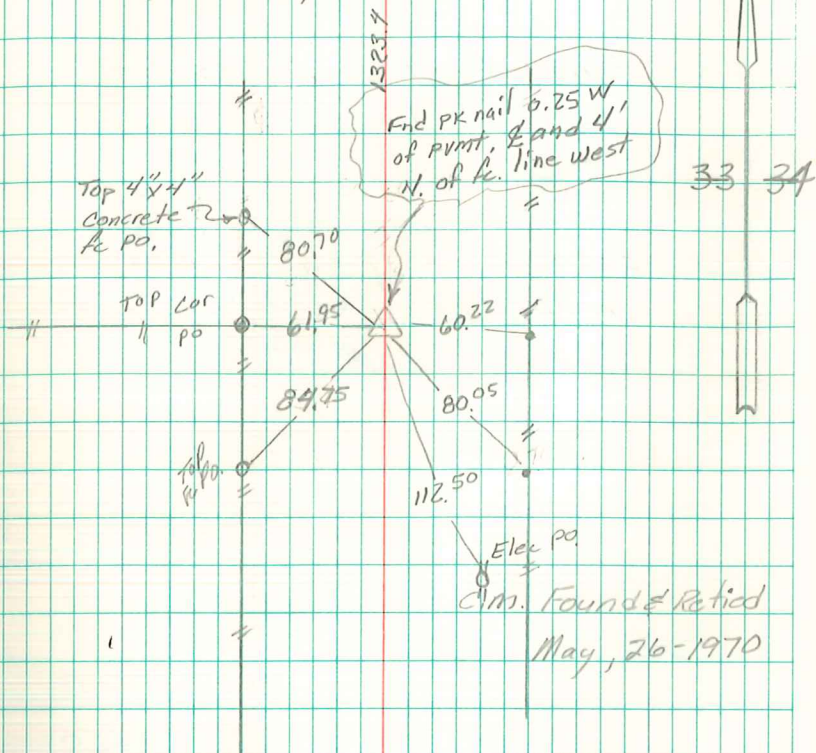
Stone on Top C.M.

Top mon 16" Below Road Bed

E/4 Cor. sec 33-77-21

Set - 10-9-1940

Notes: Kennedy, Wells, Crozier
& Burris, Hawk, H.



Found & Retied

Sept. 11, 2002

Abie Davis