

Prepared by Abie C. Davis, P.E. & L.S., 1428 Oregon St., Knoxville, IA 50138 (641) 842-5863

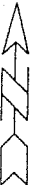
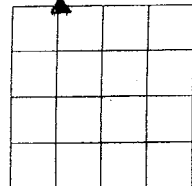
UNITED STATES PUBLIC LAND SURVEY CORNER CERTIFICATE
OF

Land survey Monuments situated in Section 33, Township 77N, Range 21W, of the Fifth Principal Meridian, Marion County, Iowa.

Previously recorded in N/A in County Recorders Office.

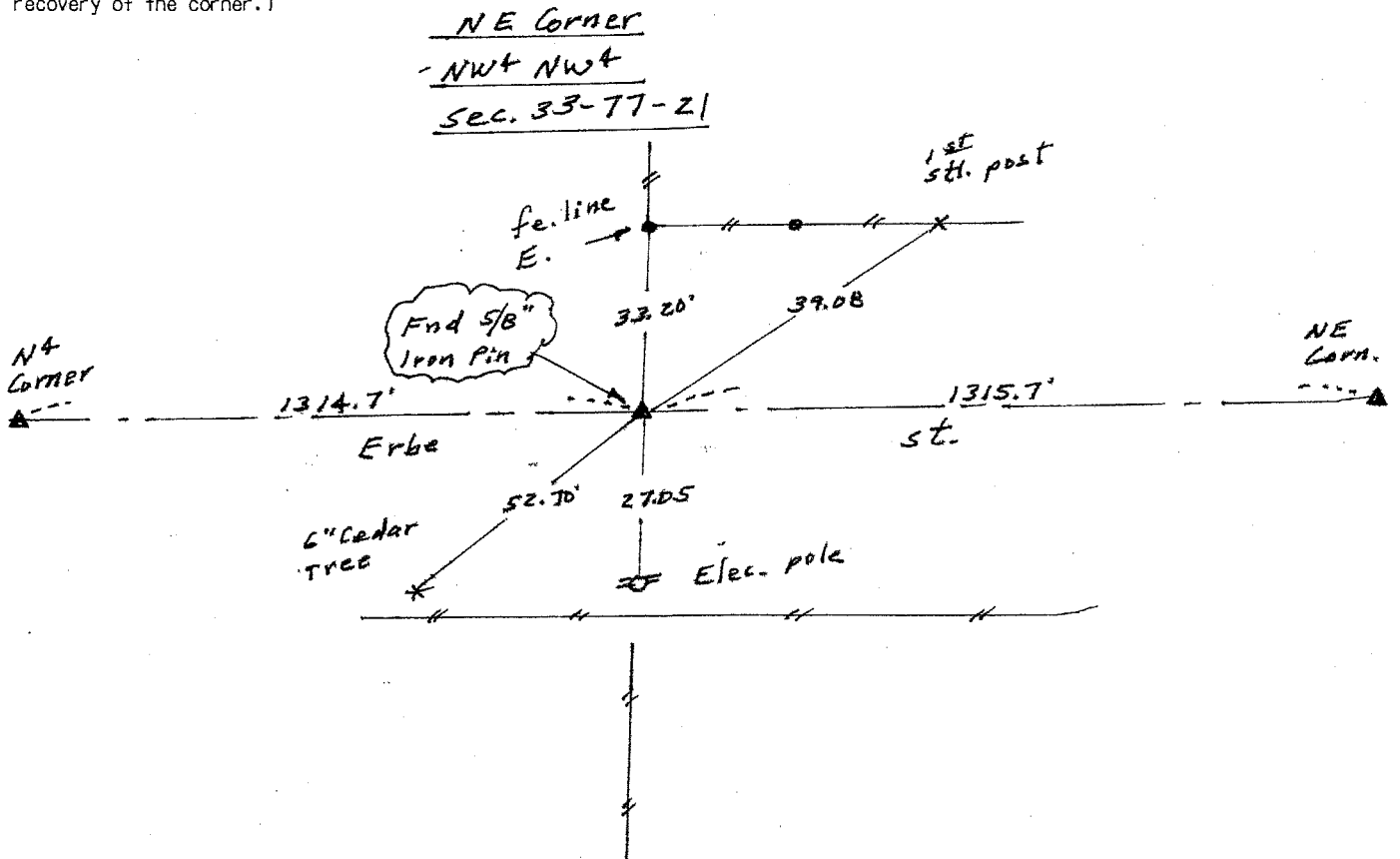
Show reason for preparing this certificate, the evidence and detailed procedures used in establishing the corner positions and monumentation found or placed

Monument Description and Remarks: Fnd 5/8" Iron Pin.



PLAN - VIEW

(Show a minimum of three reference ties to durable physical objects, relevant monuments and physical conditions that will enable recovery of the corner.)



I hereby certify that the survey work was completed and this land surveying document was prepared by me or under my direct personal supervision and that I am a duly licensed land surveyor under the laws of the state of Iowa

Signature: Abie C. Davis

Abie C. Davis, P.E. & L.S.

Date: 12/18/06 Reg. No. 5594

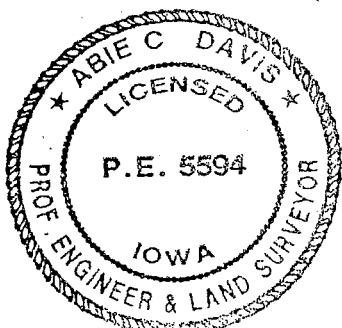
My license renewal date is December 31, 2007

List Corners to be Indexed

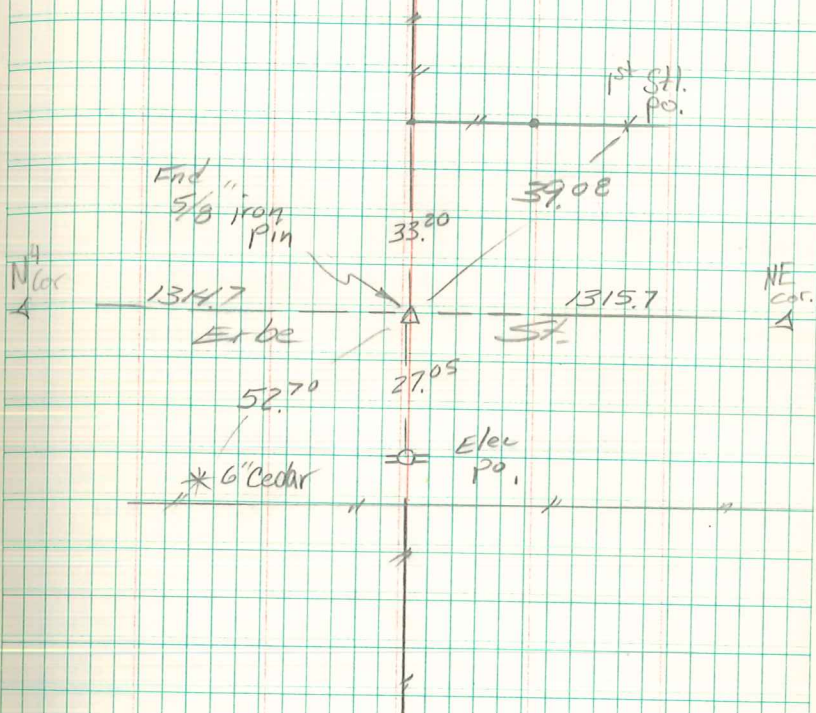
Corners	Section	Twp	Range
---------	---------	-----	-------

NE Corner	33	77N	21W
NW+NW4			

SEAL



NE Cor.
NW⁴ NW⁴
Sec 33-77-21



Abe Davis
12-18-06