

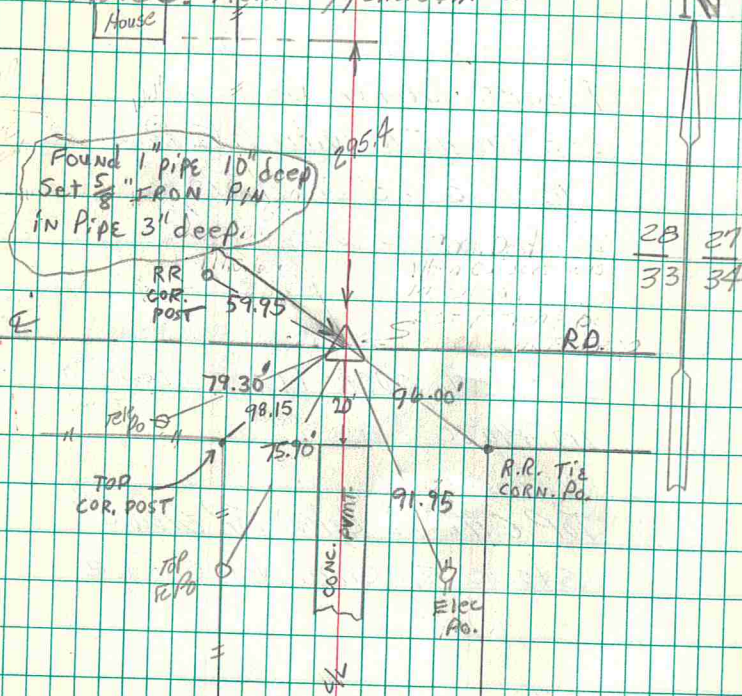
Found cylinder at or about
 100 ft. from road
 1951 1" dia pipe
 Right side of set post.

Set corner post
 Top of 10" iron cylinder
 cylinder on road side of c.m.

N.E. Cor. Sec 33-77-21.

Set 10-8-40

Notes: Kennedy, Shore & Mitchell



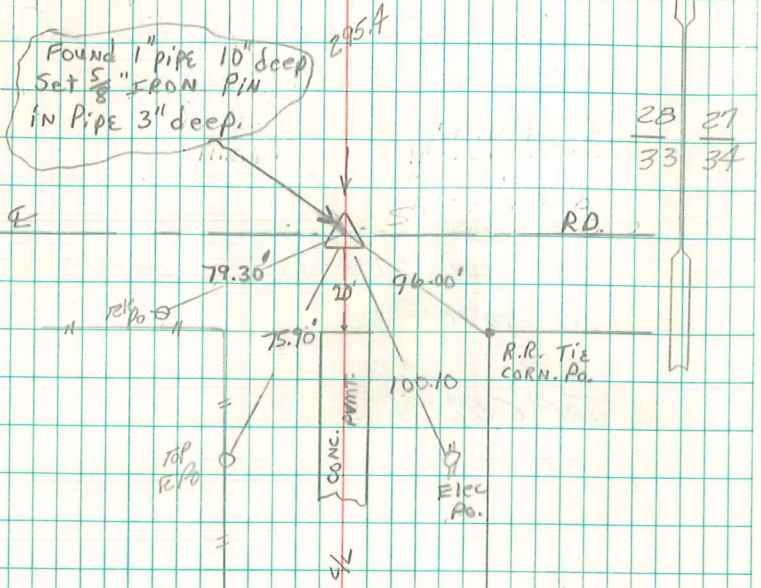
Ret'd 9-14-94 by
 ABIE C. DAVIS
 HATCH, SCHIPPERS 5/24/21

N.E. Cor. sec 33-77-21

Set 10-8-40

Notes: Kennedy, Shore & Mitchell

House



28	27
33	34

Retied 9-14-94 by ABIE C. DAVIS