

Dug hole 12' by 20'. originally in
Ditch. Found Nothing. Established
Corner by Proportional Distances &
Line between Sec. Corners.

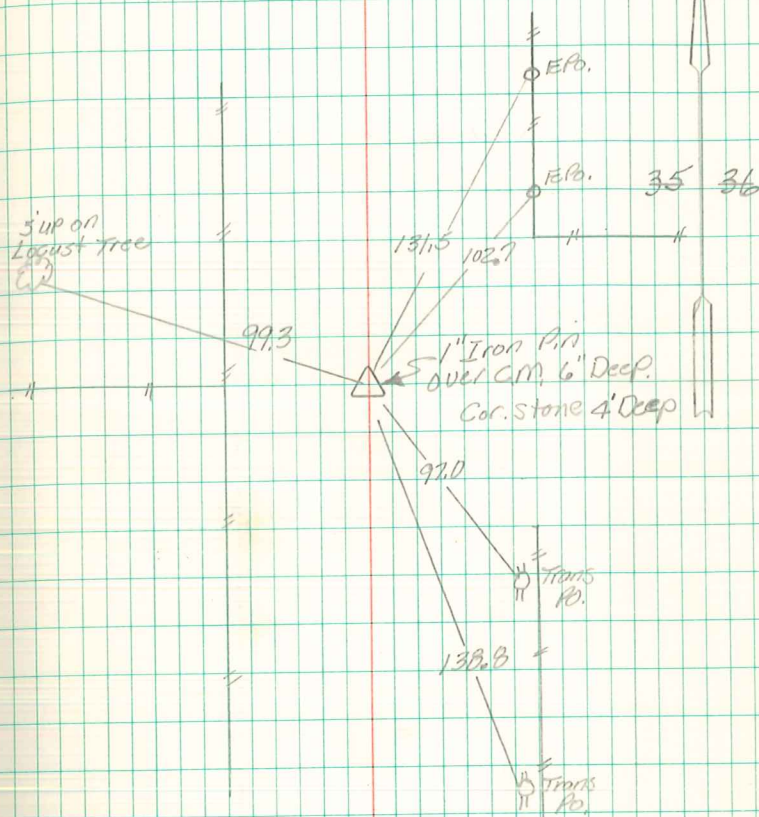
Set men over tile standing on
END, Put a stone on top man.

E 1/4 Cor. Sec. 35-77-21

set Nov-7-1941

Notes: Kennedy - Mandell & Frazier

4



Retied June 11-71
after Construction