

Found Reinforcing Rod 1"x4'
 Long. over a Piece of Tile
 Broken in Pieces.
 North of Tile was a angle Iron which was
 Left in Place.

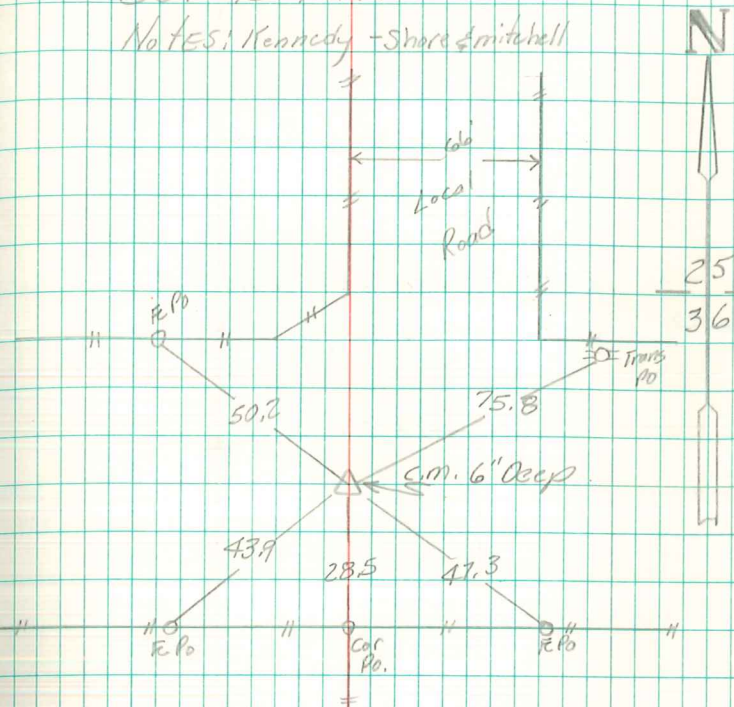
Set c.m. where we found tile, Broken
 Tile under c.m.
 Reinforcing Rod on North side.

Top c.m. 6" Deep.

N. 1/4 Cor Sec 36-77-21

Set 12-9-1940

Notes: Kennedy - Shore & Mitchell



Found & Retied

8-6-71

Moll, Pregon & Cameron