

W⁴ Cor. Sec 18-77-21

Set 10-3-1940

Notes: Kennedy, Wells, Burrus, Crozie & Hewitt

Found sand stone 20"x6"x4"
over wood stake.

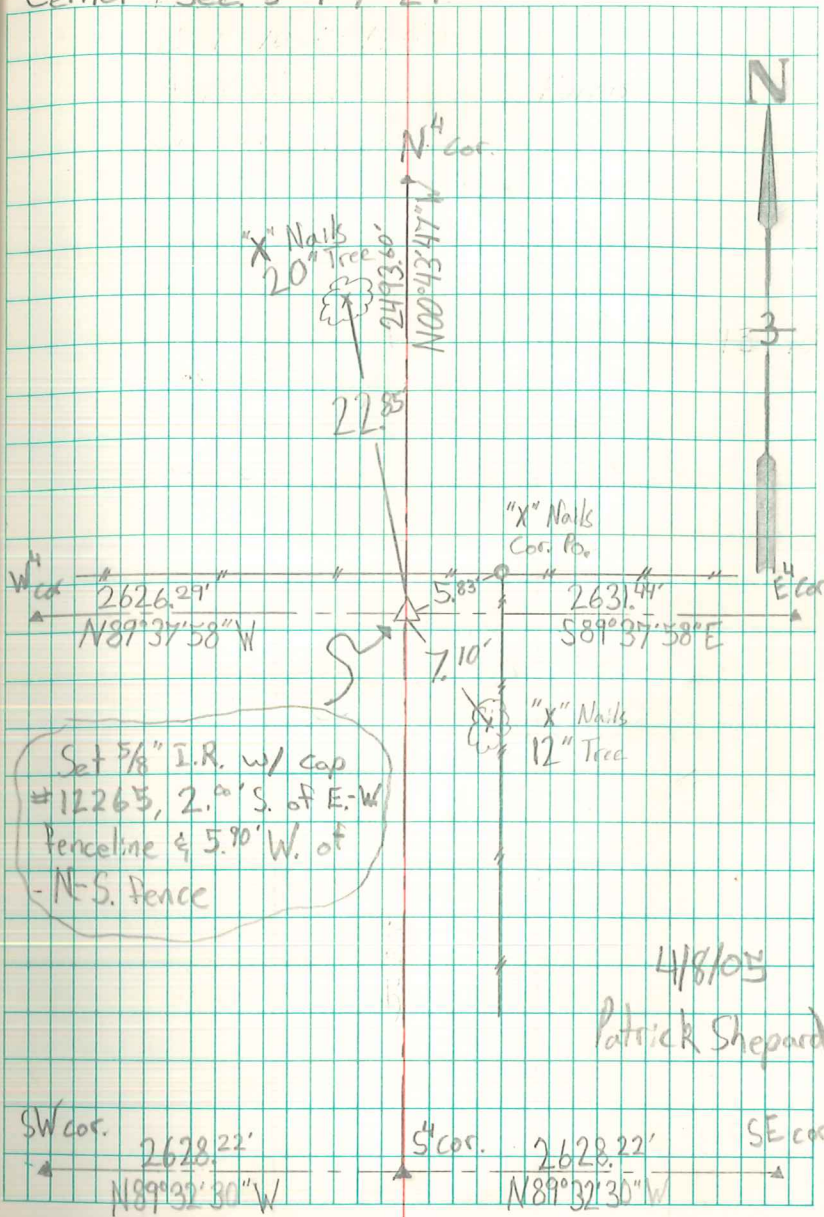
Set c.m. over Broken Crockery
set sand stone top c.m.

Top c.m. 12" Below Top of Orig Ground.

52.4'	S.E. of x Nails in 10" Locust Tree
22.7'	South " " " " 8" Elm "
59.6'	S.W. " " " " 12" " "
27.0'	North " " " " 6" Locust "

(Cor. Stone
Not Rotted after
pavement was put in.)

Center Sec 3-77-21



4/8/05
Patrick Shepard