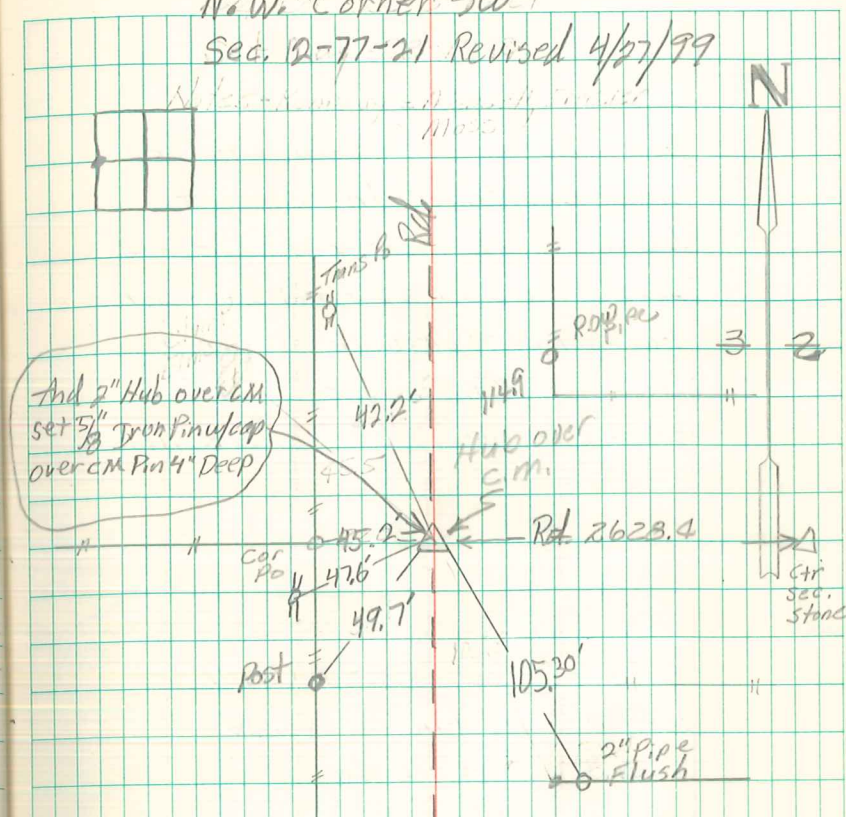


Found stone & tile at center sec 2 &
 Stone & tile 791. Feet West of center sec. set
 by J.C. Nye on line with stone at
 West $\frac{1}{4}$ Cor. Sec 2. This line & meas-
 urement, Produced west intersects
 West Sec Line 1324 Feet south of $\frac{1}{4}$
 Cor. & on line between N.E. & S.E. Cor
 of Sec. 3. Mr. Herweh owner of land
 south & west of Corner stated he had
 seen Stone before Road cut was made
 & knows it was at this Point.

Established Cor. & set c.m. over
 broken China Ware. 1314.2 Feet West
 of $\frac{1}{4}$ Cor. Fence North 1838.4 EAST
 of Stone & Tile on sub. Div. Survey
 2628.4 West of Stone & Tile at ctr. sec.
 1324.0 south of $\frac{1}{4}$ Corner.
 Put stone on top Cor. Stone.

N.W. Corner SW⁴
 Sec. 12-77-21 Revised 4/27/99



Ties From U.S. Corps ENG.
 June-1969

- 40.55 N.W. to Tab in Power Pole
- 51.9 S.W. to " " Post
- 114.9 N.E. to R.O.W. P.P.C.
- 105.3 S.E. to R.O.W. P.P.C.

4/27/99 Abie Davis