

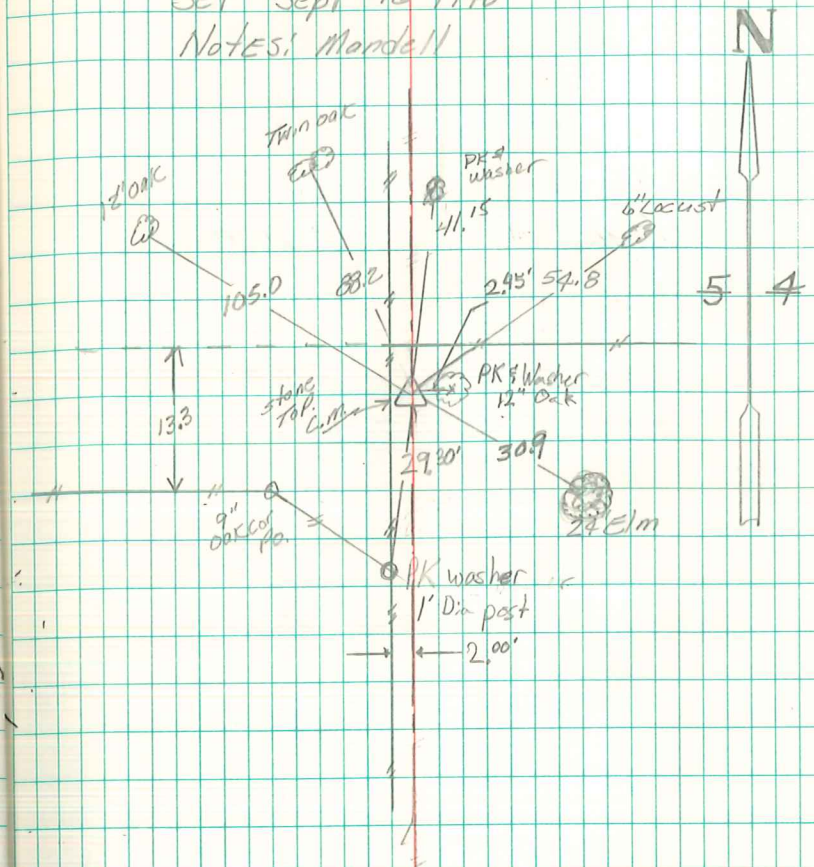
Found Granite Rock 12"x8"x6" on
Top of 2-1/2" O Tile.

Lowered one tile in Position
Set C.M. on Top Tile & Rock
Top C.M. Rock above surface

E 1/4 Cor. Sec 5-77-21

Set Sept - 16 - 1940

Notes: Mandell



Set 1/2" rebar w/cap 3321

Henry Oakes

4-22-62