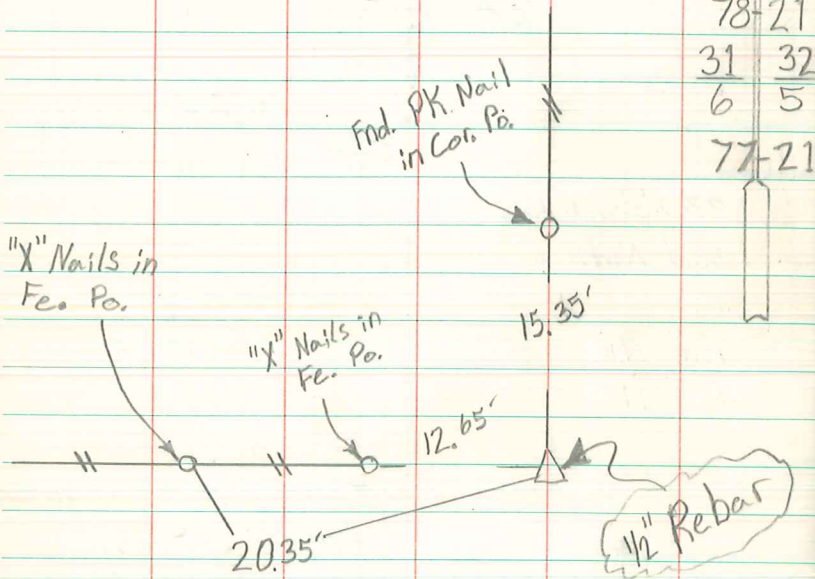


NE Cor. Sec. 6-77-21

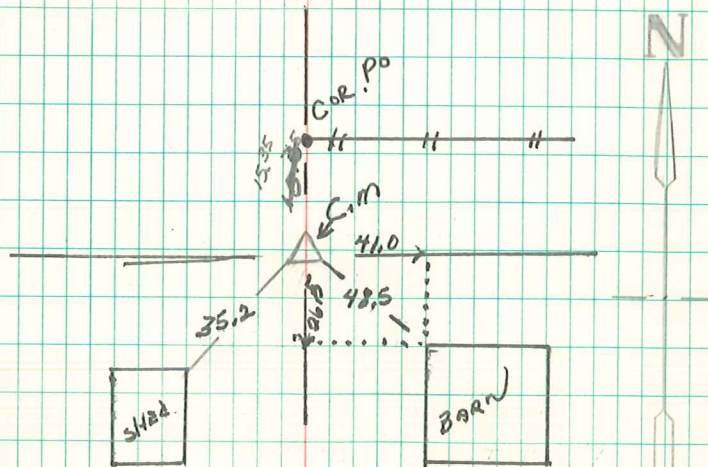
3/23/12-Notes: Found Broken Concrete Monument w/ 1/2" Rebar using Jasper County ties.



Retied:
3/23/12

N. E. Cor. sec 6 77-21

31



12-10-54
Ties From Jasper Co. ENG. W
15.3' N. to Cor. Post
35.2' SW. to N.E. Cor. Shed
41.0' to W. Line of New Barn
26.5' " N. " " " "
48.5' SE. to N.W. Cor " "

Found Conc. Mon. w/ Top Broken off
Set iron pin on N side 6" deep
6/18/93 Abie Davis

New Tie