

Found witness cor 88 Links South  
of True Cor. True Cor Taken  
out by Road Constr. Which is  
12' Deep.

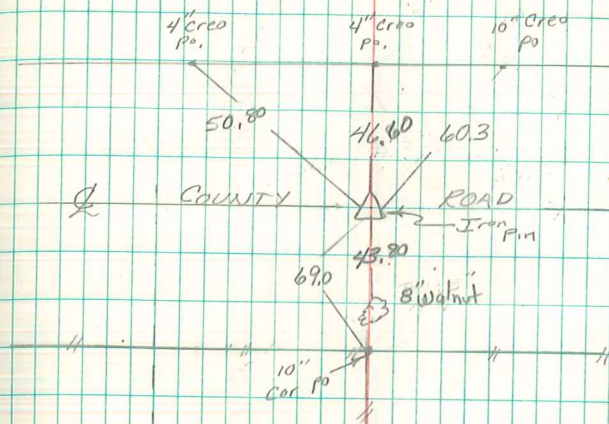
set C.M. at True Corner.

Set c.m. over 1-2"  $\square$  Tile standing  
on END, Put Granit Rock 12"x6"x6"  
on Top C.M.

N.E. Cor Sec. 8-77-21

Set 1046-41

Notes: Kennedy - Wells, further  $\frac{1}{2}$  shore.



Found & relied

4/30/91 Abie Davis

6/14/95 Henry Oakes