

Dug hole 12' square by 5' Deep at  
Point indicated by Line & measurements  
Found No Evidence of Corner.

Found Stone set at center Sec 10. +  
Stone at N.E. cor NW 1/4 SW 1/4 10.  
Found Stone set on Point of intersection  
of N. R.P.W. Line of Ry & N.E.S. Sec line

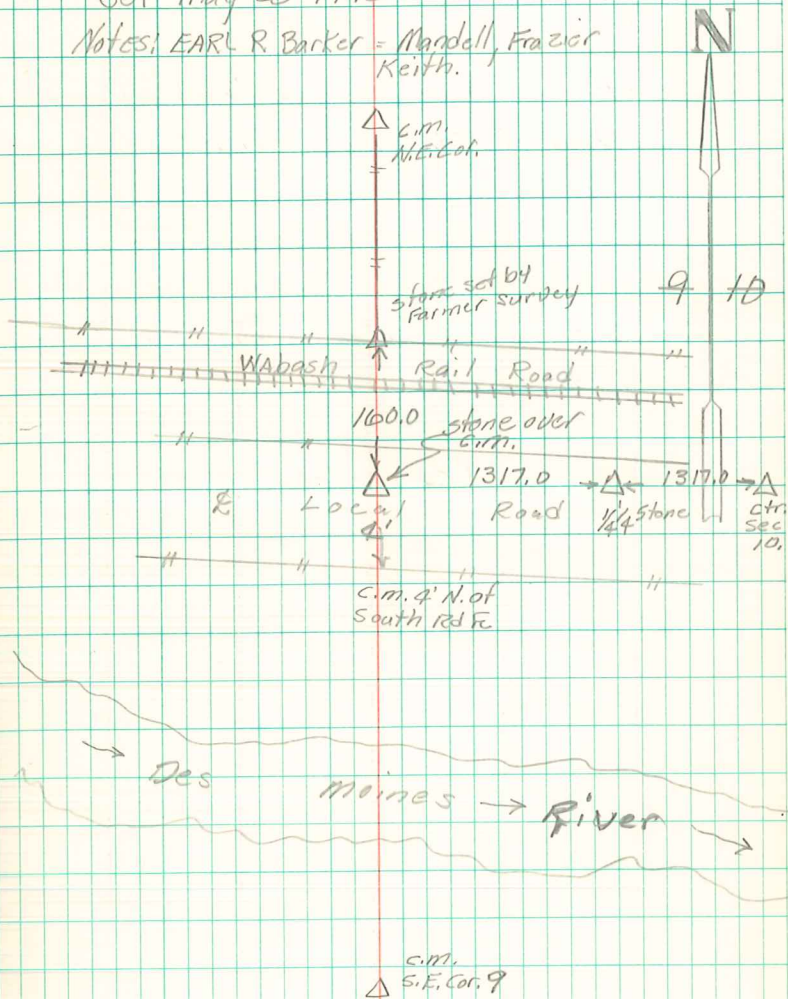
Established cor. by local evidence on  
Line between N.E. & S.E. Corners Sec 9,  
on Line with 2 stones East, and of  
Double the measurement between same.

Set C.M. over 12" Horse shoe T. leg,  
set Stone over Cor. stone.

E 1/4 Cor. Sec 9-77-21

Set May 28-1942

Notes: EARL R. Barker = Mandell, Frazier  
Keith.



Sec Book #2-77-18